

## FITC Anti-Mouse CD8a Antibody[53-6.7]

**Catalog Number:** E-AB-F1104C

**Note:** Centrifuge before opening to ensure complete recovery of vial contents.

### Description

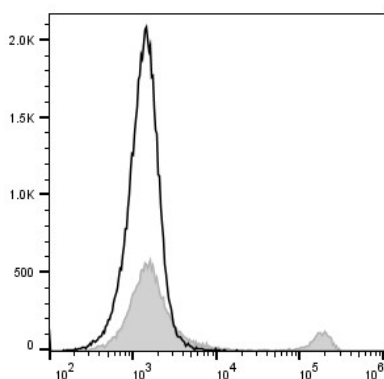
<b>Reactivity</b>	Mouse
<b>Host</b>	Rat
<b>Isotype</b>	Rat IgG2a, $\kappa$
<b>Clone No.</b>	53-6.7
<b>Isotype Control</b>	FITC Rat IgG2a, $\kappa$ Isotype Control[2A3] [Product E-AB-F09832C]
<b>Conjugation</b>	FITC
<b>Conjugation Information</b>	FITC is designed to be excited by the Blue laser (488 nm) and detected using an optical filter centered near 530 nm (e.g., a 525/40 nm bandpass filter).
<b>Storage Buffer</b>	Phosphate buffered solution, pH 7.2, containing 0.09% stabilizer and 1% protein protectant.

### Applications

### Recommended usage

<b>FCM</b>	Each lot of this antibody is quality control tested by flow cytometric analysis. <b>The amount of the reagent is suggested to be used 5 <math>\mu</math>L of antibody per test (million cells in 100 <math>\mu</math>L staining volume or per 100 <math>\mu</math>L of whole blood).</b> Please check your vial before the experiment. Since applications vary, the appropriate dilutions must be determined for individual use.
------------	--

### Data



Staining of C57BL/6 murine splenocytes with FITC Anti-Mouse CD8a Antibody[53-6.7] (filled gray histogram) or FITC Rat IgG2a,  $\kappa$  Isotype Control (empty black histogram). Total viable cells were used for analysis.

### Preparation & Storage

<b>Storage</b>	Keep as concentrated solution. This product can be stored at 2-8°C for 12 months. Please protected from prolonged exposure to light and do not freeze.
<b>Shipping</b>	Ice bag

### Antigen Information

<b>Alternate Names</b>	CD8A;MAL;T-cell surface glycoprotein CD8 alpha chain;T-lymphocyte differentiation antigen T8/Leu-2
<b>Uniprot ID</b>	P01731

### For Research Use Only

**Gene ID**

12525

**Background**

CD8, also known as Lyt-2, Ly-2, or T8, consists of disulfide-linked  $\alpha$  and  $\beta$  chains that form the  $\alpha$ (CD8a)/ $\beta$ (CD8b) heterodimer and  $\alpha/\alpha$  homodimer. CD8a is a 34 kD protein that belongs to the immunoglobulin family. The CD8  $\alpha/\beta$  heterodimer is expressed on the surface of most thymocytes and a subset of mature TCR  $\alpha/\beta$  T cells. CD8 expression on mature T cells is non-overlapping with CD4. The CD8  $\alpha/\alpha$  homodimer is expressed on a subset of  $\gamma/\delta$  TCR-bearing T cells, NK cells, intestinal intraepithelial lymphocytes, and lymphoid dendritic cells. CD8 is an antigen co-receptor on T cells that interacts with MHC class I on antigen-presenting cells or epithelial cells. CD8 promotes T cell activation through its association with the TCR complex and protein tyrosine kinase lck.

**For Research Use Only**