

## Recombinant BTK Monoclonal Antibody

catalog number: **AN300703L**

**Note:** Centrifuge before opening to ensure complete recovery of vial contents.

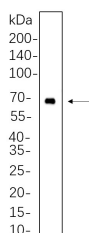
### Description

<b>Reactivity</b>	Human
<b>Immunogen</b>	Recombinant Human BTK protein
<b>Host</b>	Rabbit
<b>Isotype</b>	IgG, $\kappa$
<b>Clone</b>	B642
<b>Purification</b>	Protein A
<b>Buffer</b>	PBS, 50% glycerol, 0.05% Proclin 300, 0.05% protein protectant.

### Applications Recommended Dilution

<b>IHC</b>	1:1000-1:4000
<b>WB</b>	1:2000-1:10000
<b>IF</b>	1:200-1:1000
<b>ELISA</b>	1:5000-1:20000
<b>IP</b>	1:50-1:200

### Data



Western Blot with Recombinant BTK Monoclonal Antibody at dilution of 1:1000 dilution. Lane A: RAW264.7 whole cell lysate.

**Observed-MW:67 kDa**

**Calculated-MW:67 kDa**

### Preparation & Storage

<b>Storage</b>	Store at -20°C Valid for 12 months. Avoid freeze / thaw cycles.
<b>Shipping</b>	Ice bag

### Background

The protein encoded by this gene plays a crucial role in B-cell development. Mutations in this gene cause X-linked agammaglobulinemia type 1, which is an immunodeficiency characterized by the failure to produce mature B lymphocytes, and associated with a failure of Ig heavy chain rearrangement. Alternative splicing results in multiple transcript variants encoding different isoforms.

### For Research Use Only