

## RPS27L Polyclonal Antibody

**catalog number: E-AB-18756**

**Note:** Centrifuge before opening to ensure complete recovery of vial contents.

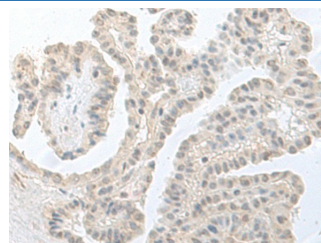
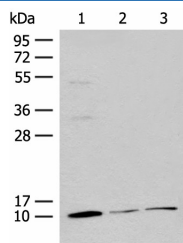
### Description

<b>Reactivity</b>	Human;Mouse;Rat
<b>Immunogen</b>	Fusion protein of human RPS27L
<b>Host</b>	Rabbit
<b>Isotype</b>	IgG
<b>Purification</b>	Antigen affinity purification
<b>Buffer</b>	Phosphate buffered solution, pH 7.4, containing 0.05% stabilizer and 50% glycerol.

### Applications Recommended Dilution

<b>WB</b>	1:500-1:2000
<b>IHC</b>	1:40-1:200

### Data



Western blot analysis of Mouse adrenal gland tissue Rat lung tissue 231 cell lysates using RPS27L Polyclonal Antibody at dilution of 1:400  
Immunohistochemistry of paraffin-embedded Human thyroid cancer tissue using RPS27L Polyclonal Antibody at dilution of 1:55(×200)

**Observed-MW:Refer to figures**  
**Calculated-MW:9 kDa**

### Preparation & Storage

<b>Storage</b>	Store at -20°C Valid for 12 months. Avoid freeze / thaw cycles.
<b>Shipping</b>	The product is shipped with ice pack,upon receipt,store it immediately at the temperature recommended.

### Background

This gene encodes a protein sharing 96% amino acid similarity with ribosomal protein S27, which suggests the encoded protein may be a component of the 40S ribosomal subunit. RPS27L (Ribosomal Protein S27 Like) is a Protein Coding gene. Among its related pathways are Viral mRNA Translation and Activation of the mRNA upon binding of the cap-binding complex and eIFs, and subsequent binding to 43S. GO annotations related to this gene include poly(A) RNA binding and cysteine-type endopeptidase activator activity involved in apoptotic process. An important paralog of this gene is RPS27.

### For Research Use Only