

Recombinant Human ETS1/EWSR2 Protein (His Tag)

Catalog Number:PKSH032408



Note: Centrifuge before opening to ensure complete recovery of vial contents.

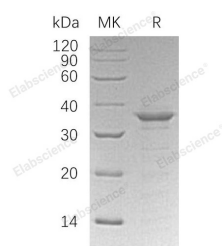
Description

Synonyms	ETS1 Protein;Protein C-ets-1;V-ets Erythroblastosis Virus E26 Oncogene Homolog 1 (Avian);Isoform CRA_a;ETS1;hCG_1732038
Species	Human
Expression Host	E.coli
Sequence	Met 1-Thr 272
Accession	P14921-5
Calculated Molecular Weight	33.0 kDa
Observed molecular weight	38 kDa
Tag	N-His

Properties

Purity	> 95 % as determined by reducing SDS-PAGE.
Endotoxin	< 1.0 EU per µg of the protein as determined by the LAL method.
Storage	Generally, lyophilized proteins are stable for up to 12 months when stored at -20 to -80°C. Reconstituted protein solution can be stored at 4-8°C for 2-7 days. Aliquots of reconstituted samples are stable at < -20°C for 3 months.
Shipping	This product is provided as lyophilized powder which is shipped with ice packs.
Formulation	Lyophilized from a 0.2 µm filtered solution of PBS, 1mM EDTA, pH 7.4. Normally 5 % - 8 % trehalose, mannitol and 0.01% Tween80 are added as protectants before lyophilization. Please refer to the specific buffer information in the printed manual.
Reconstitution	Please refer to the printed manual for detailed information.

Data



> 95 % as determined by reducing SDS-PAGE.

Background

ETS1 Protein (ETS1) is a nuclear protein that belongs to the ETS family. Members of this family recognize the core consensus DNA sequence GGAA/T in target genes. Proteins function either as transcriptional activators or repressors of numerous genes. They are involved in stem cell development, cell senescence and death, and tumorigenesis. ETS1 is a transcription factor, containing one ETS DNA-binding domain and one PNT (pointed) domain. It has been shown to interact with TTRAP, UBE2I and Death Associated Protein 6.

For Research Use Only

A Reliable Research Partner in Life Science and Medicine

Toll-free: 1-888-852-8623

Web: www.elabscience.com

Tel: 1-832-243-6086

Email: techsupport@elabscience.com

Fax: 1-832-243-6017