

MAP1LC3A Monoclonal Antibody

catalog number: E-AB-22136

Note: Centrifuge before opening to ensure complete recovery of vial contents.

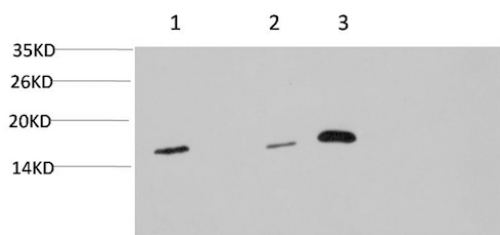
Description

Reactivity	Human;Mouse;Rat
Immunogen	Synthetic Peptide of LC3A
Host	Mouse
Isotype	IgG
Clone	7E4
Purification	Protein A purification
Buffer	Phosphate buffered solution, pH 7.4, containing 0.05% stabilizer, 0.5% protein protectant and 50% glycerol.

Applications

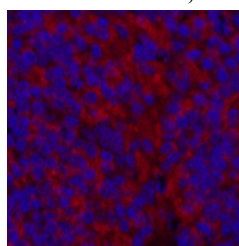
Applications	Recommended Dilution
WB	1:500-1:2000
IHC	1:100-1:200
IF	1:100-1:300

Data

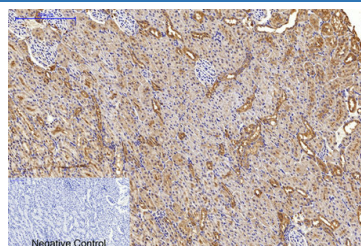


Western Blot analysis of 1) Hela, 2) 3T3, 3) Rat brain using MAP1LC3A Monoclonal Antibody at dilution of 1:1000.

Observed-MW:14 ,16kDa



Immunofluorescence analysis of Mouse spleen tissue using MAP1LC3A Monoclonal Antibody at dilution of 1:200.



Immunohistochemistry of paraffin-embedded Rat kidney tissue using MAP1LC3A Monoclonal Antibody at dilution of 1:200.

Preparation & Storage

Storage	Store at -20°C Valid for 12 months. Avoid freeze / thaw cycles.
Shipping	The product is shipped with ice pack, upon receipt, store it immediately at the temperature recommended.

Background

For Research Use Only

MAP1A and MAP1B are microtubule-associated proteins which mediate the physical interactions between microtubules and components of the cytoskeleton. MAP1A and MAP1B each consist of a heavy chain subunit and multiple light chain subunits. The protein encoded by this gene is one of the light chain subunits and can associate with either MAP1A or MAP1B. Two transcript variants encoding different isoforms have been found for this gene. The expression of variant 1 is suppressed in many tumor cell lines, suggesting that may be involved in carcinogenesis.

For Research Use Only

Toll-free: 1-888-852-8623
Web: www.elabscience.com

Tel: 1-832-243-6086
Email: techsupport@elabscience.com

Fax: 1-832-243-6017

Rev. V1.8