

## Recombinant Human IGSF3/EWI-3 Protein (His Tag)

**Catalog Number:** PKSH031166

**Note:** Centrifuge before opening to ensure complete recovery of vial contents.

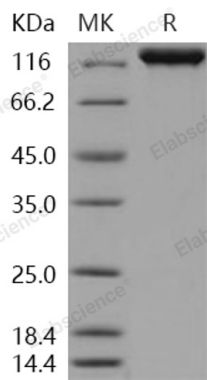
### Description

<b>Species</b>	Human
<b>Source</b>	HEK293 Cells-derived Human IGSF3/EWI-3 protein Met 1-Ala 1124, with an C-terminal His
<b>Calculated MW</b>	126.6 kDa
<b>Observed MW</b>	140 kDa
<b>Accession</b>	O75054-1
<b>Bio-activity</b>	Not validated for activity

### Properties

<b>Purity</b>	> 98 % as determined by reducing SDS-PAGE.
<b>Endotoxin</b>	< 1.0 EU per µg of the protein as determined by the LAL method.
<b>Storage</b>	Generally, lyophilized proteins are stable for up to 12 months when stored at -20 to -80°C. Reconstituted protein solution can be stored at 4-8°C for 2-7 days. Aliquots of reconstituted samples are stable at < -20°C for 3 months.
<b>Shipping</b>	This product is provided as lyophilized powder which is shipped with ice packs.
<b>Formulation</b>	Lyophilized from sterile PBS, pH 7.4 Normally 5% - 8% trehalose, mannitol and 0.01% Tween 80 are added as protectants before lyophilization. Please refer to the specific buffer information in the printed manual.
<b>Reconstitution</b>	Please refer to the printed manual for detailed information.

### Data



> 98 % as determined by reducing SDS-PAGE.

### Background

Immunoglobulin superfamily member 3 (IGSF3), also known as Glu-Trp-Ile EWI motif-containing protein 3, IgSF3 and EWI-3 and IGSF3, is a single-pass type I membrane protein which belongs to the EWI subfamily of the Ig Superfamily of molecules. IGSF3 has an overall structural similarity and strong sequence similarity to V7, a human leukocyte surface protein. IGSF3 contains eight Ig-like C2-type (immunoglobulin-like) domains. IGSF3 is expressed in a wide range of tissues with high expression in Placenta, kidney and lung. EWI-2 is part of a novel Ig subfamily that includes EWI-F (F2alpha receptor regulatory protein (FPRP), CD9P-1 ), EWI-3 (IGSF3), and EWI-101 (CD101). All four members of this Ig subfamily contain a Glu-Trp-Ile (EWI) motif not seen in other Ig proteins. Human IGSF3 shares 92 % aa identity with mouse IGSF3.

### For Research Use Only