

Recombinant Human ICAM-2/CD102 Protein (His Tag)

Catalog Number: PKSH033641



Note: Centrifuge before opening to ensure complete recovery of vial contents.

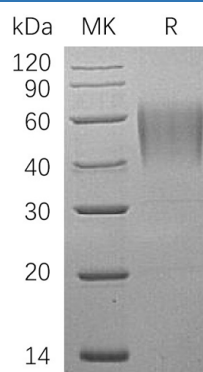
Description

Species	Human
Mol_Mass	23.1 kDa
Accession	P13598
Bio-activity	Not validated for activity

Properties

Purity	> 95 % as determined by reducing SDS-PAGE.
Endotoxin	< 1.0 EU per µg of the protein as determined by the LAL method.
Storage	Generally, lyophilized proteins are stable for up to 12 months when stored at -20 to -80 °C. Reconstituted protein solution can be stored at 4-8°C for 2-7 days. Aliquots of reconstituted samples are stable at < -20°C for 3 months.
Shipping	This product is provided as lyophilized powder which is shipped with ice packs.
Formulation	Lyophilized from a 0.2 µm filtered solution of PBS, pH 7.4. Normally 5% - 8% trehalose, mannitol and 0.01% Tween 80 are added as protectants before lyophilization. Please refer to the specific buffer information in the printed manual.
Reconstitution	Please refer to the printed manual for detailed information.

Data



> 95 % as determined by reducing SDS-PAGE.

Background

ICAM-2 is a 55-65 kD transmembrane glycoprotein possessing 2 extracellular Ig domains, a single transmembrane domain, and a short 26-amino acid cytoplasmic domain. ICAM-2 is expressed on most leukocytes, and is strongly expressed on vascular endothelial cells. Interactions of ICAM-2 and the integrin receptors mediate cell adhesion in a wide range of lymphocyte, monocyte, natural killer cell, and granulocytewith other cells, and play important roles in many adhesion-dependent immune and inflammation responses, such as T cell aggregation, NK-cell cytotoxicity and migration, lymphocyte recirculation, etc. Serum levels of ICAM-2 correlated significantly with the inflammatory and course sequences of trichinosis in mice and had a similar relation with blood eosinophilia. So, estimation of ICAM-2 serum levels may prove useful in diagnosis of trichinosis recent infections, and in monitoring the prognosis and response to treatment.

For Research Use Only

A Reliable Research Partner in Life Science and Medicine
Tel:400-999-2100

Email:techsupport@elabscience.cn

Web:www.elabscience.cn

Rev. V3.2