

KCNS2 Polyclonal Antibody

catalog number: E-AB-66534

Note: Centrifuge before opening to ensure complete recovery of vial contents.

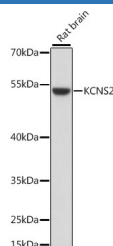
Description

Reactivity	Human;Mouse;Rat
Immunogen	Recombinant fusion protein of human KCNS2 (NP_065748.1).
Host	Rabbit
Isotype	IgG
Purification	Affinity purification
Buffer	Phosphate buffered solution, pH 7.4, containing 0.05% stabilizer and 50% glycerol.

Applications

Applications	Recommended Dilution
WB	1:500-1:2000
IF	1:50-1:100

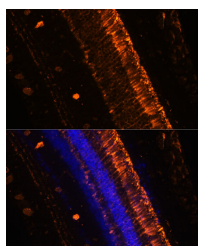
Data



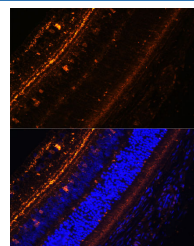
Western blot analysis of extracts of Rat brain using KCNS2 Polyclonal Antibody at dilution of 1:1000.

Observed-MW:54 kDa

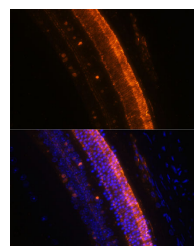
Calculated-MW:54 kDa



Immunofluorescence analysis of Mouse eye using KCNS2 Polyclonal Antibody at dilution of 1:100 (20x lens). Blue: DAPI for nuclear staining.



Immunofluorescence analysis of Rat eye using KCNS2 Polyclonal Antibody at dilution of 1:100 (40x lens). Blue: DAPI for nuclear staining.



Immunofluorescence analysis of Mouse eye using KCNS2 Polyclonal Antibody at dilution of 1:100 (40x lens). Blue: DAPI for nuclear staining.

Preparation & Storage

Storage	Store at -20°C Valid for 12 months. Avoid freeze / thaw cycles.
Shipping	The product is shipped with ice pack, upon receipt, store it immediately at the temperature recommended.

Background

For Research Use Only

KCNS2 (Potassium Voltage-Gated Channel Modifier Subfamily S Member 2) is a Protein Coding gene. Diseases associated with KCNS2 include Essential Tremor and Charcot-Marie-Tooth Disease, Recessive Intermediate B. Among its related pathways are Potassium Channels and Transmission across Chemical Synapses. Gene Ontology (GO) annotations related to this gene include ion channel activity and delayed rectifier potassium channel activity. An important paralog of this gene is KCNS3.

For Research Use Only

Toll-free: 1-888-852-8623
Web: www.elabscience.com

Tel: 1-832-243-6086
Email: techsupport@elabscience.com

Fax: 1-832-243-6017

Rev. V1.7