

## PAI1 Polyclonal Antibody

**catalog number: E-AB-40651**

**Note:** Centrifuge before opening to ensure complete recovery of vial contents.

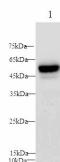
### Description

<b>Reactivity</b>	Rat
<b>Immunogen</b>	Recombinant Rat PAI1 protein expressed by Mammalian
<b>Host</b>	Rabbit
<b>Isotype</b>	IgG
<b>Purification</b>	Antigen Affinity Purification
<b>Buffer</b>	PBS with 0.05% Proclin300, 1% protective protein and 50% glycerol, pH7.4

### Applications Recommended Dilution

<b>WB</b>	1:250-1:500
-----------	-------------

### Data



Western Blot analysis of Rat placenta using PAI1 Polyclonal antibody at dilution of 1:1000.

**Observed-MW:47 kDa**

**Calculated-MW:45 kDa**

### Preparation & Storage

<b>Storage</b>	Store at -20°C Valid for 12 months. Avoid freeze / thaw cycles.
<b>Shipping</b>	The product is shipped with ice pack, upon receipt, store it immediately at the temperature recommended.

### Background

Serine protease inhibitor. Inhibits TMPRSS7. Is a primary inhibitor of tissue-type plasminogen activator (PLAT) and urokinase-type plasminogen activator (PLAU). As PLAT inhibitor, it is required for fibrinolysis down-regulation and is responsible for the controlled degradation of blood clots. As PLAU inhibitor, it is involved in the regulation of cell adhesion and spreading. Acts as a regulator of cell migration, independently of its role as protease inhibitor. It is required for stimulation of keratinocyte migration during cutaneous injury repair. It is involved in cellular and replicative senescence. Plays a role in alveolar type 2 cells senescence in the lung. Is involved in the regulation of cementogenic differentiation of periodontal ligament stem cells, and regulates odontoblast differentiation and dentin formation during odontogenesis.

### For Research Use Only