

Elab Fluor® Violet 450 Anti-Mouse Ly-6A/E (Sca-1) Antibody[E13-161.7]

Catalog Number: AN00924Q

Note: Centrifuge before opening to ensure complete recovery of vial contents.

Description

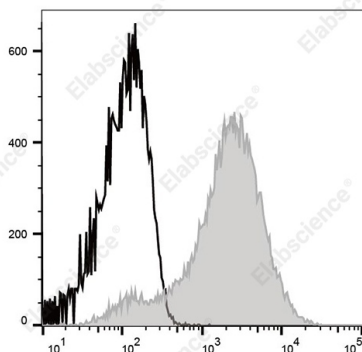
| | |
|--------------------------------|------------------------------------------------------------------------------------------------------------------------------------------------------------------------------|
| Reactivity | Mouse |
| Host | Rat |
| Isotype | Rat IgG2a, κ |
| Clone No. | E13-161.7 |
| Isotype Control | Elab Fluor® Violet 450 Rat IgG2a, κ Isotype Control[2A3] [Product E-AB-F09832Q] |
| Conjugation | Elab Fluor® Violet 450 |
| Conjugation Information | Elab Fluor® Violet 450 is designed to be excited by the violet laser (405 nm) and detected using an optical filter centered near 450 nm (e.g., a 450/45 nm bandpass filter). |
| Storage Buffer | Phosphate buffered solution, pH 7.2, containing 0.09% stabilizer. |

Applications

Recommended usage

| | |
|------------|-------------------------------------------------------------------------------------------------------------------------------------------------------------------------------------------------------------------------------------------------------------------------------------------------------------------------------------------------------------------------------------|
| FCM | Each lot of this antibody is quality control tested by flow cytometric analysis. The amount of the reagent is suggested to be used 5 μL of antibody per test (million cells in 100 μL staining volume or per 100 μL of whole blood). Please check your vial before the experiment. Since applications vary, the appropriate dilutions must be determined for individual use. |
|------------|-------------------------------------------------------------------------------------------------------------------------------------------------------------------------------------------------------------------------------------------------------------------------------------------------------------------------------------------------------------------------------------|

Data



Staining of C57BL/6 murine splenocytes with Elab Fluor® Violet 450 Anti-Mouse Ly-6A/E (Sca-1) Antibody[E13-161.7]

(filled gray histogram) or Elab Fluor® Violet 450 Rat IgG2a, κ Isotype Control (empty black histogram). Total viable cells were used for analysis.

Preparation & Storage

| | |
|-----------------|-----------------------------------------------------------------------------------------------------------------------------------------------------------|
| Storage | Keep as concentrated solution. This product can be stored at 2-8°C for 24 months. Please protected from prolonged exposure to light and do not freeze. |
| Shipping | Ice bag |

Antigen Information

| | |
|------------------------|--------|
| Alternate Names | Sca-1 |
| Uniprot ID | P05533 |
| Gene ID | 110454 |

For Research Use Only

Background

Ly-6A/E is an 18 kD member of the Ly-6 multigene family also known as Sca-1. Ly6A/E is a glycosylphosphatidylinositol (GPI)-linked protein expressed on hematopoietic stem cells. In mice expressing the Ly-6.2 haplotype (e.g., AKR, C57BL, C57BR, DBA/2, SJL, SWR, and 129), Ly-6A/E is also expressed on peripheral B lymphocytes and thymic and peripheral T lymphocytes. Strains expressing the Ly-6.1 haplotype (e.g., BALB/c, CBA, C3H/He, DBA/1, and NZB) have low Ly-6A/E expression on resting peripheral lymphocytes. The expression of Ly-6A/E on lymphocytes is upregulated upon activation from both Ly6.1 and Ly6.2 haplotype mice. Ly-6A/E is thought to be involved in the regulation of both T and B cell responses. The E13-161.7 antibody has been reported to be useful for immunohistochemical staining of frozen sections, immunoprecipitation, flow cytometry, and complement-mediated cytotoxicity.