

# Recombinant Human MEK2/MAP2K2/MKK2 Protein (GST Tag)



Catalog Number:PKSH031494

**Note:** Centrifuge before opening to ensure complete recovery of vial contents.

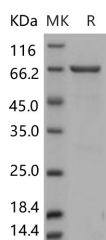
## Description

<b>Synonyms</b>	CFC4;FLJ26075;MAPKK2;MEK2;MKK2;PRKMK2
<b>Species</b>	Human
<b>Expression Host</b>	Baculovirus-Insect Cells
<b>Sequence</b>	Met 1-Val 400
<b>Accession</b>	NP_109587.1
<b>Calculated Molecular Weight</b>	70.7 kDa
<b>Observed molecular weight</b>	66 kDa
<b>Tag</b>	N-GST

## Properties

<b>Purity</b>	> 92 % as determined by reducing SDS-PAGE.
<b>Endotoxin</b>	< 1.0 EU per µg of the protein as determined by the LAL method.
<b>Storage</b>	Generally, lyophilized proteins are stable for up to 12 months when stored at -20 to -80°C. Reconstituted protein solution can be stored at 4-8°C for 2-7 days. Aliquots of reconstituted samples are stable at < -20°C for 3 months.
<b>Shipping</b>	This product is provided as lyophilized powder which is shipped with ice packs.
<b>Formulation</b>	Lyophilized from sterile 20mM Tris, 500mM NaCl, 2mM GSH, pH 7.4 Normally 5 % - 8 % trehalose, mannitol and 0.01% Tween80 are added as protectants before lyophilization. Please refer to the specific buffer information in the printed manual.
<b>Reconstitution</b>	Please refer to the printed manual for detailed information.

## Data



> 92 % as determined by reducing SDS-PAGE.

## Background

Dual specificity mitogen-activated protein kinase kinase 2, also known as MAP kinase kinase 2, MAPKK2, ERK activator kinase 2, MAPK / ERK kinase 2, MEK2 and MAP2K2, is a member of the protein kinase superfamily, STE Ser/Thr protein kinase family and MAP kinase kinase subfamily. MAP2K2 / MEK2 contains one protein kinase domain. MEK1 and MEK2 (also known as MAP2K1 and MAP2K2, respectively) are evolutionarily conserved, dual-specificity kinases that mediate Erk1 and Erk2 activation during adhesion and growth factor signaling. MAP2K1 / MEK1 is a crucial modulator of Mek and Erk signaling and have potential implications for the role of MEK1 and MEK2 in tumorigenesis. MAP2K2 / MEK2 catalyzes the concomitant phosphorylation of a threonine and a tyrosine residue in a Thr-Glu-Tyr sequence located in MAP kinases. It also activates the ERK1 and ERK2 MAP kinases. Defects in MAP2K2 are a cause of

## For Research Use Only

A Reliable Research Partner in Life Science and Medicine

Toll-free: 1-888-852-8623

Web: [www.elabscience.com](http://www.elabscience.com)

Tel: 1-832-243-6086

Email: [techsupport@elabscience.com](mailto:techsupport@elabscience.com)

Fax: 1-832-243-6017

# Recombinant Human MEK2/MAP2K2/MKK2 Protein (GST Tag)



Catalog Number: PKSH031494

---

cardiofaciocutaneous syndrome (CFC syndrome) which is characterized by a distinctive facial appearance, heart defects and mental retardation. Heart defects include pulmonic stenosis, atrial septal defects and hypertrophic cardiomyopathy.

---

## For Research Use Only

A Reliable Research Partner in Life Science and Medicine

Toll-free: 1-888-852-8623

Web: [www.elabscience.com](http://www.elabscience.com)

Tel: 1-832-243-6086

Email: [techsupport@elabscience.com](mailto:techsupport@elabscience.com)

Fax: 1-832-243-6017