

PMCH Polyclonal Antibody

catalog number: E-AB-92737

Note: Centrifuge before opening to ensure complete recovery of vial contents.

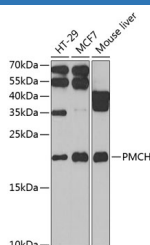
Description

| | |
|---------------------|--|
| Reactivity | Human;Mouse |
| Immunogen | Recombinant fusion protein of human PMCH |
| Host | Rabbit |
| Isotype | IgG |
| Purification | Affinity purification |
| Buffer | Phosphate buffered solution, pH 7.4, containing 0.05% stabilizer and 50% glycerol. |

Applications Recommended Dilution

| | |
|-----------|--------------|
| WB | 1:500-1:2000 |
|-----------|--------------|

Data



Western blot analysis of extracts of various cell lines using PMCH Polyclonal Antibody at 1:1000 dilution.

Observed-MW:19 kDa

Calculated-MW:18 kDa

Preparation & Storage

| | |
|-----------------|--|
| Storage | Store at -20°C Valid for 12 months. Avoid freeze / thaw cycles. |
| Shipping | The product is shipped with ice pack, upon receipt, store it immediately at the temperature recommended. |

Background

This gene encodes a preproprotein that is proteolytically processed to generate multiple protein products. These products include melanin-concentrating hormone (MCH), neuropeptide-glutamic acid-isoleucine (NEI), and neuropeptide-glycine-glutamic acid (NGE). Melanin-concentrating hormone is a 19-amino acid neuropeptide that stimulates hunger and may additionally regulate energy homeostasis, reproductive function, and sleep. Pseudogenes of this gene have been identified on chromosome 5.

For Research Use Only