

## FLNC Polyclonal Antibody

**catalog number: AN006990L**

**Note:** Centrifuge before opening to ensure complete recovery of vial contents.

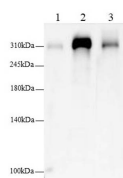
### Description

<b>Reactivity</b>	Human;Mouse;Rat
<b>Immunogen</b>	Recombinant Human FLNC protein expressed by E.coli
<b>Host</b>	Rabbit
<b>Isotype</b>	IgG
<b>Purification</b>	Antigen Affinity Purification
<b>Buffer</b>	PBS with 0.05% Proclin300, 1% protective protein and 50% glycerol, pH7.4

### Applications

<b>WB</b>	1:500-1:1000
-----------	--------------

### Data



Western blot with Anti FLNC Polyclonal antibody at dilution of 1:1000. Lane 1: HeLa cell lysate, Lane 2: NIH/3T3 cell lysate, Lane 3: Rat skeletal muscle tissue lysate.

**Observed-MW:310 kDa**

**Calculated-MW:291 kDa**

### Preparation & Storage

<b>Storage</b>	Store at -20°C Valid for 12 months. Avoid freeze / thaw cycles.
<b>Shipping</b>	The product is shipped with ice pack, upon receipt, store it immediately at the temperature recommended.

### Background

FLNC, Filamin-c, Filamin-2 (FLN2), Actin binding-like protein (APBL) (290.8 kDa) is an isoform of the Filamin proteins family. Filamins are broadly expressed and function as actin-binding and actin-crosslinking proteins. Structurally, Filamins consist of three main domains; N-terminal actin-binding domain, multiple central immunoglobulin (Ig) domains, and a C-terminal domain which supports homodimerization.

### For Research Use Only