

AKR1A1 Polyclonal Antibody

catalog number: E-AB-15910

Note: Centrifuge before opening to ensure complete recovery of vial contents.

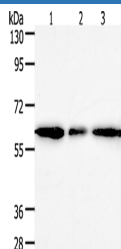
Description

| | |
|---------------------|--|
| Reactivity | Human;Mouse;Rat |
| Immunogen | Synthetic peptide of human AKR1A1 |
| Host | Rabbit |
| Isotype | IgG |
| Purification | Affinity purification |
| Buffer | Phosphate buffered solution, pH 7.4, containing 0.05% stabilizer and 50% glycerol. |

Applications

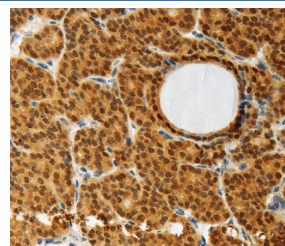
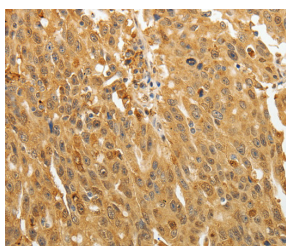
| Applications | Recommended Dilution |
|--------------|----------------------|
| WB | 1:500-1:2000 |
| IHC | 1:50-1:200 |

Data



1:500

Calculated-MW:37 kDa



1:30

Western Blot analysis of Human liver cancer tissue, hela and 293T cell using AKR1A1 Polyclonal Antibody at dilution of 1:500

Immunohistochemistry of paraffin-embedded Human thyroid cancer using AKR1A1 Polyclonal Antibody at dilution of 1:30

Immunohistochemistry of paraffin-embedded Human ovarian cancer using AKR1A1 Polyclonal Antibody at dilution of 1:30

1:30

Preparation & Storage

| | |
|-----------------|--|
| Storage | Store at -20°C Valid for 12 months. Avoid freeze / thaw cycles. |
| Shipping | The product is shipped with ice pack,upon receipt,store it immediately at the temperature recommended. |

Background

For Research Use Only

This gene encodes a member of the aldo/keto reductase superfamily, which consists of more than 40 known enzymes and proteins. This member, also known as aldehyde reductase, is involved in the reduction of biogenic and xenobiotic aldehydes and is present in virtually every tissue. Multiple alternatively spliced transcript variants of this gene exist, all encoding the same protein.

For Research Use Only

Toll-free: 1-888-852-8623
Web: www.elabscience.com

Tel: 1-832-243-6086
Email: techsupport@elabscience.com

Fax: 1-832-243-6017

Rev. V1.7