

## PE Anti-Human CD105 Antibody[SN6]

Catalog Number: E-AB-F1310D

**Note:** Centrifuge before opening to ensure complete recovery of vial contents.

### Description

<b>Reactivity</b>	Human
<b>Host</b>	Mouse
<b>Isotype</b>	Mouse IgG1, κ
<b>Clone No.</b>	SN6
<b>Isotype Control</b>	PE Mouse IgG1, κ Isotype Control[MOPC-21] [Product E-AB-F09792D]
<b>Conjugation</b>	PE
<b>Conjugation Information</b>	PE is designed to be excited by the Blue (488 nm), Green (532 nm) and Yellow-Green (561 nm) lasers and detected using an optical filter centered near 575 nm (e.g., a 585/42 nm bandpass filter).
<b>Storage Buffer</b>	Phosphate buffered solution, pH 7.2, containing 0.09% sodium azide and 1% BSA.

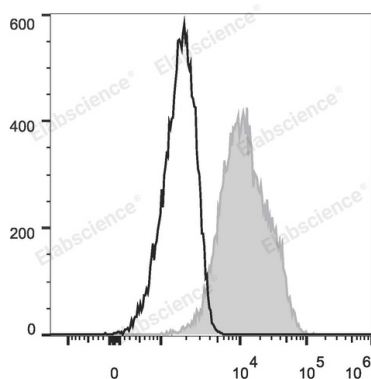
### Applications

### Recommended usage

#### FCM

Each lot of this antibody is quality control tested by flow cytometric analysis. **The amount of the reagent is suggested to be used 5 μL of antibody per test (million cells in 100 μL staining volume or per 100 μL of whole blood).** Please check your vial before the experiment. Since applications vary, the appropriate dilutions must be determined for individual use.

### Data



THP-1 cell are stained with PE Anti-Human CD105 Antibody (filled gray histogram) or PE Mouse IgG1, κ Isotype Control (empty black histogram).

### Preparation & Storage

<b>Storage</b>	Keep as concentrated solution. This product can be stored at 2-8°C for 12 months. Please protected from prolonged exposure to light and do not freeze.
<b>Shipping</b>	Ice bag

### Antigen Information

<b>Alternate Names</b>	Endoglin
<b>Uniprot ID</b>	P17813
<b>Gene ID</b>	1088

### For Research Use Only

## Background

CD105 is a 95-100 kD glycosylphosphatidylinositol (GPI)-linked protein also known as CD67, CGM6, and NCA-95. CD105 is a member of the immunoglobulin superfamily, carcinoembryonic antigen (CEA)-like subfamily. CD66b, expressed on granulocytes, has been reported to induce activation in neutrophils and to be involved in heterophilic adhesion with CD66c.