

# METAP2 Polyclonal Antibody

Catalog Number: E-AB-62370



**Note:** Centrifuge before opening to ensure complete recovery of vial contents.

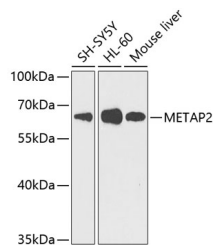
## Description

<b>Reactivity</b>	Human, Mouse
<b>Immunogen</b>	Recombinant fusion protein of human METAP2 (NP_006829.1).
<b>Host</b>	Rabbit
<b>Isotype</b>	IgG
<b>Purification</b>	Affinity purification
<b>Conjugation</b>	Unconjugated
<b>Formulation</b>	PBS with 0.02% sodium azide, 50% glycerol, pH7.3.

## Applications Recommended Dilution

<b>WB</b>	1:200-1:2000
-----------	--------------

## Data



Western blot analysis of extracts of various cell lines using METAP2 Polyclonal Antibody at dilution of 1:1000.

**Observed MW: 60kDa**  
**Calculated Mw: 50kDa/52kDa**

## Preparation & Storage

**Storage** Store at -20°C. Avoid freeze / thaw cycles.

## Background

The protein encoded by this gene is a member of the methionyl aminopeptidase family. The encoded protein functions both by protecting the alpha subunit of eukaryotic initiation factor 2 from inhibitory phosphorylation and by removing the amino-terminal methionine residue from nascent proteins. Increased expression of this gene is associated with various forms of cancer, and the anti-cancer drugs fumagillin and ovalicin inhibit the protein by irreversibly binding to its active site. Inhibitors of this gene have also been shown to be effective for the treatment of obesity. A pseudogene of this gene is located on chromosome 2. Several transcript variants encoding different isoforms have been found for this gene.

## For Research Use Only

A Reliable Research Partner in Life Science and Medicine

Toll-free: 1-888-852-8623

Web: [www.elabscience.com](http://www.elabscience.com)

Tel: 1-832-243-6086

Email: [techsupport@elabscience.com](mailto:techsupport@elabscience.com)

Fax: 1-832-243-6017