

Recombinant Human PODXL protein (SUMO,His tag)

Catalog Number:PDEH100209



Note: Centrifuge before opening to ensure complete recovery of vial contents.

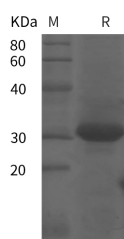
Description

Synonyms	PCLP;PCLP1;PCLP-1;PCLPGCTM-2 antigen;PCpodocalyxin;PODXL;Podocalyxin;Podocalyxin-like protein 1;podocalyxin-like;PODXL
Species	Human
Expression Host	E.coli
Sequence	Ala 220-Ile 431
Accession	O00592
Calculated Molecular Weight	34.2 kDa
Observed molecular weight	32 kDa
Tag	N-SUMO-His

Properties

Purity	> 95 % as determined by reducing SDS-PAGE.
Endotoxin	Please contact us for more information.
Storage	Generally, lyophilized proteins are stable for up to 12 months when stored at -20 to -80°C. Reconstituted protein solution can be stored at 4-8°C for 2-7 days. Aliquots of reconstituted samples are stable at < -20°C for 3 months.
Shipping	This product is provided as lyophilized powder which is shipped with ice packs.
Formulation	Lyophilized from sterile PBS, pH 7.4. Normally 5 % - 8 % trehalose, mannitol and 0.01 % Tween80 are added as protectants before lyophilization. Please refer to the specific buffer information in the printed manual.
Reconstitution	Please refer to the printed manual for detailed information.

Data



> 95 % as determined by reducing SDS-PAGE.

Background

Podocalyxin (PODXL), also known as Podocalyxin-like protein 1 (PCLP-1), is a heavily glycosylated transmembrane sialoprotein in the CD34 and Endoglycan family. Podocalyxin is expressed on glomerular and vascular endothelial cells, neurons, hematopoietic, mesenchymal, and cardiac stem cells, and metastatic carcinoma and glioblastoma tumor cells. A soluble form of Podocalyxin can be released into the urine of women with pre-eclampsia. Podocalyxin promotes platelet activation, neurite outgrowth, branching, and synaptogenesis, homing of hematopoietic progenitor cells to the bone marrow and spleen, and engraftment of mesenchymal and cardiac stem cells into ischemic heart and kidney. Its interactions with L-Selectin and E-Selectin mediate the tethering of lymphocytes and metastatic tumor cells to the

For Research Use Only

A Reliable Research Partner in Life Science and Medicine

Toll-free: 1-888-852-8623

Web: www.elabscience.com

Tel: 1-832-243-6086

Email: techsupport@elabscience.com

Fax: 1-832-243-6017

Recombinant Human PODXL protein (SUMO,His tag)

Catalog Number:PDEH100209



vascular endothelium.

For Research Use Only

A Reliable Research Partner in Life Science and Medicine

Toll-free: 1-888-852-8623

Tel: 1-832-243-6086

Fax: 1-832-243-6017

Web: www.elabscience.com

Email: techsupport@elabscience.com