

Note: Centrifuge before opening to ensure complete recovery of vial contents.

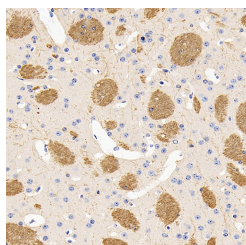
Description

Reactivity	Mouse, Rat
Immunogen	Recombinant protein corresponding to Mouse Myelin Basic Protein
Host	Rabbit
Isotype	IgG
Purification	Affinity purification
Conjugation	Unconjugated
Formulation	PBS with 0.02% sodium azide, 1% protective protein and 50% glycerol, pH7.4

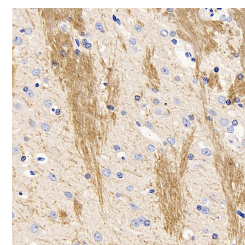
Applications Recommended Dilution

IHC	1:300-1:1000
------------	--------------

Data



Immunohistochemistry analysis of paraffin-embedded mouse brain using MBP Polyclonal Antibody at dilution of 1:600.



Immunohistochemistry analysis of paraffin-embedded rat brain using MBP Polyclonal Antibody at dilution of 1:300.

Preparation & Storage

Storage Store at -20°C. Avoid freeze / thaw cycles.

Background

MBP belongs to the myelin basic protein family. The classic group of MBP isoforms (isoform 4-isoform 14) are the most abundant protein components of the myelin membrane in the CNS. They have a role in both its formation and stabilization. The smaller isoforms might have an important role in remyelination of denuded axons in multiple sclerosis. The non-classic group of MBP isoforms (isoform 1-isoform 3/Golli-MBPs) may preferentially have a role in the early developing brain long before myelination, maybe as components of transcriptional complexes, and may also be involved in signaling pathways in T-cells and neural cells. MBP has six isoforms. Catalog#10458-1-AP is capable of recognizing multiple isoforms of MBP.

For Research Use Only

A Reliable Research Partner in Life Science and Medicine

Toll-free: 1-888-852-8623

Web: www.elabscience.com

Tel: 1-832-243-6086

Email: techsupport@elabscience.com

Fax: 1-832-243-6017