

Rad21 Polyclonal Antibody

catalog number: E-AB-93246

Note: Centrifuge before opening to ensure complete recovery of vial contents.

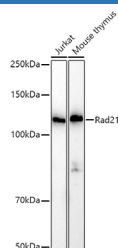
Description

| | |
|---------------------|--|
| Reactivity | Human;Mouse;Rat |
| Immunogen | Recombinant fusion protein of human Rad21 |
| Host | Rabbit |
| Isotype | IgG |
| Purification | Affinity purification |
| Buffer | Phosphate buffered solution, pH 7.4, containing 0.05% stabilizer and 50% glycerol. |

Applications Recommended Dilution

| | |
|------------|--------------|
| WB | 1:500-1:2000 |
| IHC | 1:50-1:200 |
| IF | 1:50-1:200 |
| IP | 1:50-1:200 |

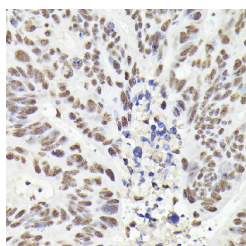
Data



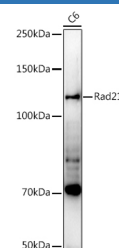
Western blot analysis of extracts of various cell lines using Rad21 Polyclonal Antibody at 1:1000 dilution.

Observed-MW:130 kDa

Calculated-MW:71 kDa



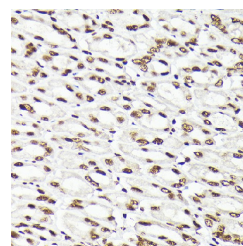
Immunohistochemistry of paraffin-embedded human colon carcinoma using Rad21 Polyclonal Antibody at dilution of 1:200 (40x lens). Perform high pressure antigen retrieval with 10 mM citrate buffer pH 6.0 before commencing with IHC staining protocol.



Western blot analysis of extracts of C6 cells using Rad21 Polyclonal Antibody at 1:1000 dilution.

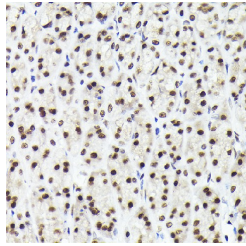
Observed-MW:130 kDa

Calculated-MW:71 kDa

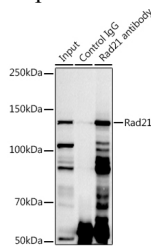


Immunohistochemistry of paraffin-embedded mouse stomach using Rad21 Polyclonal Antibody at dilution of 1:200 (40x lens). Perform high pressure antigen retrieval with 10 mM citrate buffer pH 6.0 before commencing with IHC staining protocol.

For Research Use Only



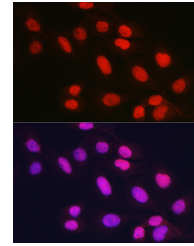
Immunohistochemistry of paraffin-embedded rat stomach using Rad21 Polyclonal Antibody at dilution of 1:200 (40x lens). Perform high pressure antigen retrieval with 10 mM citrate buffer pH 6.0 before commencing with IHC staining protocol.



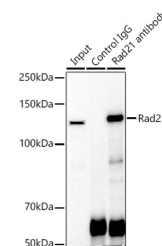
Immunoprecipitation analysis of 300ug extracts of Jurkat cells using 3ug Rad21 Polyclonal Antibody. Western blot was performed from the immunoprecipitate using Rad21 Polyclonal Antibody at a dilution of 1:1000.

Observed-MW:130 kDa

Calculated-MW:71 kDa



Immunofluorescence analysis of U2OS cells using Rad21 Polyclonal Antibody at dilution of 1:100 (40x lens). Blue: DAPI for nuclear staining.



Immunoprecipitation analysis of 300ug extracts of Jurkat cells using 3ug Rad21 Polyclonal Antibody. Western blot was performed from the immunoprecipitate using Rad21 Polyclonal Antibody at a dilution of 1:1000.

Observed-MW:130 kDa

Calculated-MW:71 kDa

Preparation & Storage

Storage

Store at -20°C Valid for 12 months. Avoid freeze / thaw cycles.

Shipping

The product is shipped with ice pack, upon receipt, store it immediately at the temperature recommended.

Background

The protein encoded by this gene is highly similar to the gene product of *Schizosaccharomyces pombe rad21*, a gene involved in the repair of DNA double-strand breaks, as well as in chromatid cohesion during mitosis. This protein is a nuclear phospho-protein, which becomes hyperphosphorylated in cell cycle M phase. The highly regulated association of this protein with mitotic chromatin specifically at the centromere region suggests its role in sister chromatid cohesion in mitotic cells. [provided by RefSeq, Jul 2008]

For Research Use Only