

## Elab Fluor® 700 Anti-Mouse CD1d Antibody[19G11]

Catalog Number: E-AB-F1032UM1

Note: Centrifuge before opening to ensure complete recovery of vial contents.

### Description

<b>Reactivity</b>	Mouse
<b>Host</b>	Rat
<b>Isotype</b>	Rat IgG2b, κ
<b>Clone No.</b>	19G11
<b>Isotype Control</b>	Elab Fluor® 700 Rat IgG2b, κ Isotype Control[LTF-2] [Product E-AB-F09843M1]
<b>Conjugation</b>	Elab Fluor® 700
<b>Conjugation Information</b>	Elab Fluor® 700 is designed to be excited by the Red laser (627-640 nm) and detected using an optical filter centered near 719 nm (e.g., a 725/40 nm bandpass filter).
<b>Storage Buffer</b>	Phosphate buffered solution, pH 7.2, containing 0.09% sodium azide and 1% BSA.

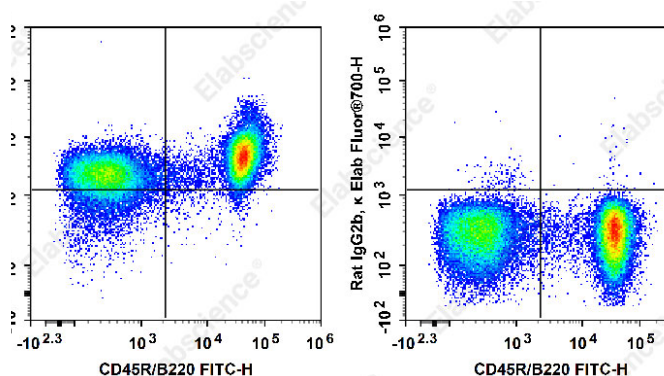
### Applications

### Recommended usage

#### FCM

Each lot of this antibody is quality control tested by flow cytometric analysis. Please check your vial before the experiment. Since applications vary, the appropriate dilutions must be determined for individual use. We suggest each investigator should titrate the reagent to obtain optimal results [The recommended concentration is 0.1-1 μg/10<sup>6</sup> cells in 100 μL volume].

### Data



Staining of C57BL/6 murine splenocytes with FITC Anti-Mouse CD45R/B220 Antibody[RA3.3A 1/6.1] and Elab Fluor® 700 Anti-Mouse CD1d Antibody[19G11](left) or Elab Fluor® 700 Rat IgG2b, κ Isotype Control(right). Total viable cells were used for analysis.

### Preparation & Storage

<b>Storage</b>	Keep as concentrated solution. This product can be stored at 2-8°C for 12 months. Please protected from prolonged exposure to light and do not freeze.
<b>Shipping</b>	Ice bag

### Antigen Information

<b>Alternate Names</b>	Antigen-presenting glycoprotein CD1d1;CD1d.1;Cd1.1;Cd1d1
<b>Uniprot ID</b>	P11609
<b>Gene ID</b>	12479

### For Research Use Only

## Background

CD1d is a type I transmembrane protein and member of the MHC family, with a molecular weight ranging from 43-49 kD, depending on the glycosylation degree. CD1d is expressed by antigen presenting cells such as dendritic cells, monocytes, macrophages and B cells; also expressed by thymocytes and intestinal epithelial cells. CD1d present glycolipids to iNKT cells that recognize them by their V $\alpha$ 14i TCR.