

Recombinant Human N-Glycosylase/OGG1 Protein

Catalog Number: PKSH032809

Note: Centrifuge before opening to ensure complete recovery of vial contents.

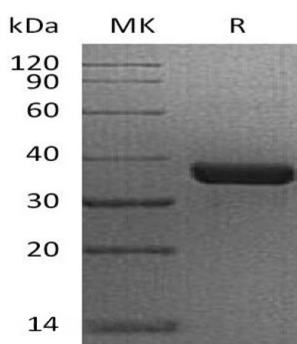
Description

Species	Human
Source	E.coli-derived Human N-Glycosylase;OGG1 protein Met 1-Gly345
Calculated MW	38.8 kDa
Observed MW	38 kDa
Accession	AAH00657.1
Bio-activity	Not validated for activity

Properties

Purity	> 95 % as determined by reducing SDS-PAGE.
Concentration	Subject to label value.
Endotoxin	< 1.0 EU per µg of the protein as determined by the LAL method.
Storage	Store at < -20°C, stable for 6 months. Please minimize freeze-thaw cycles.
Shipping	This product is provided as liquid. It is shipped at frozen temperature with blue ice/ gel packs. Upon receipt, store it immediately at < - 20°C.
Formulation	Supplied as a 0.2 µm filtered solution of 20mM Tris-HCl, 150mM NaCl, 1mM EDTA, pH 8.5.

Data



> 95 % as determined by reducing SDS-PAGE.

Background

Human N-Glycosylase/DNA Lyase(OOG1) is a DNA repair enzyme, which belongs to the type-1 OGG1 family. OOG1 incises DNA at 8-oxoG residues, and excises 7,8-dihydro-8-oxoguanine and 2,6-diamino-4-hydroxy-5-N-methylformamidopyrimidine (FAPY) from damage DNA. It has a β -lyase activity that nicks DNA 3' to the lesion. OOG1 together with APEX1 is recruited to nuclear speckles in UVA-irradiated cells. The OGG1 gene mutations may be caused Renal cell carcinoma.

For Research Use Only

Toll-free: 1-888-852-8623
Web: www.elabscience.com

Tel: 1-832-243-6086
Email: techsupport@elabscience.com

Fax: 1-832-243-6017