

## Filamin-c Polyclonal Antibody

**catalog number:** E-AB-40582

**Note:** Centrifuge before opening to ensure complete recovery of vial contents.

### Description

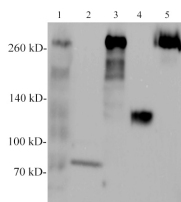
|                     |  |
|---------------------|--|
| <b>Reactivity</b>   | Human;Mouse;Rat  |
| <b>Immunogen</b>    | Recombinant Human Filamin-c protein expressed by E.coli.                 |
| <b>Host</b>         | Rabbit   |
| <b>Isotype</b>      | IgG  |
| <b>Purification</b> | Antigen Affinity Purification  |
| <b>Conjugation</b>  | Unconjugated   |
| <b>Buffer</b>       | PBS with 0.05% proclin 300, 1% protective protein and 50% glycerol,pH7.4 |

### Applications

### Recommended Dilution

|           |            |
|-----------|------------|
| <b>WB</b> | 1:500-1000 |
|-----------|------------|

### Data



Western blotting with anti-Filamin-c polyclonal antibody at dilution of 1:500. Lane 1: Mouse skeletal muscle lysate, Lane 2: Mouse liver lysate (Negative), lane 3: Rat skeletal muscle lysate, Lane 4: Rat liver lysate (Negative), Lane 5: HeLa cell lysate.

**Observed-MV:290 kDa**

**Calculated-MV:291 kDa**

### Preparation & Storage

|                 |  |
|-----------------|--|
| <b>Storage</b>  | Store at -20°C Valid for 12 months. Avoid freeze / thaw cycles.  |
| <b>Shipping</b> | The product is shipped with ice pack,upon receipt,store it immediately at the temperature recommended. |

### Background

FLNC, Filamin-c, Filamin-2 (FLN2), Actin binding-like protein (APBL) (290.8 kDa) is an isoform of the Filamin proteins family. Filamins are broadly expressed and function as actin-binding and actin-crosslinking proteins. Structurally, Filamins consist of three main domains; N-terminal actin-binding domain, multiple central immunoglobulin (Ig) domains, and a C-terminal domain which supports homodimerization.

## For Research Use Only