

## Recombinant Human Ribonuclease A/RNASE1 Protein (His Tag)

**Catalog Number:** PKSH033004

**Note:** Centrifuge before opening to ensure complete recovery of vial contents.

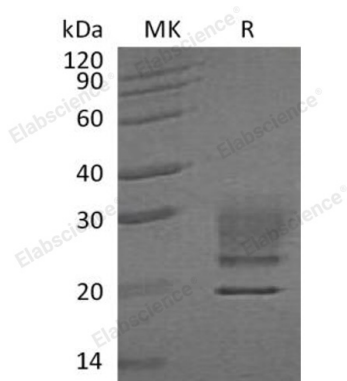
### Description

<b>Species</b>	Human
<b>Source</b>	HEK293 Cells-derived Human Ribonuclease A;RNASE1 protein Lys29-Thr156, with an C-terminal His
<b>Mol_Mass</b>	15.6 kDa
<b>Accession</b>	P07998
<b>Bio-activity</b>	Not validated for activity

### Properties

<b>Purity</b>	> 95 % as determined by reducing SDS-PAGE.
<b>Endotoxin</b>	< 1.0 EU per µg of the protein as determined by the LAL method.
<b>Storage</b>	Store at < -20°C, stable for 6 months. Please minimize freeze-thaw cycles.
<b>Shipping</b>	This product is provided as liquid. It is shipped at frozen temperature with blue ice/gel packs. Upon receipt, store it immediately at < - 20°C.
<b>Formulation</b>	Supplied as a 0.2 µm filtered solution of 20mM PB, 150mM NaCl, 10% Glycerol, pH 7.4.
<b>Reconstitution</b>	Not Applicable

### Data



> 95 % as determined by reducing SDS-PAGE.

### Background

Ribonuclease Pancreatic is a secreted enzyme that belongs to the pancreatic ribonuclease family. RNASE1 is an endonuclease that cleaves internal phosphodiester RNA bonds on the 3'-side of pyrimidine bases. RNASE1 prefers pol y(C) as a substrate and hydrolyzes 2',3'-cyclic nucleotides, with a pH optimum near 8.0. RNASE1 acts on single stranded and double stranded RNA.

### For Research Use Only

Toll-free: 1-888-852-8623  
Web: [www.elabscience.com](http://www.elabscience.com)

Tel: 1-832-243-6086  
Email: [techsupport@elabscience.com](mailto:techsupport@elabscience.com)

Fax: 1-832-243-6017