

Carboxypeptidase B2 Polyclonal Antibody

catalog number: E-AB-40640

Note: Centrifuge before opening to ensure complete recovery of vial contents.

Description

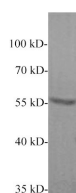
Reactivity	Human
Immunogen	Recombinant Human CPB2 protein expressed by E.coli.
Host	Rabbit
Isotype	IgG
Purification	Antigen Affinity Purification
Conjugation	Unconjugated
Buffer	PBS with 0.05% proclin 300, 1% protective protein and 50% glycerol,pH7.4

Applications

Recommended Dilution

WB	1:250-1:500
-----------	-------------

Data



Western blot of Human plasma with anti-CPB2 polyclonal antibody at 1:1000 dilution.

Observed-MW:56 kDa

Calculated-MW:48 kDa

Preparation & Storage

Storage	Store at -20°C Valid for 12 months. Avoid freeze / thaw cycles.
Shipping	The product is shipped with ice pack,upon receipt,store it immediately at the temperature recommended.

Background

CPB2 (Carboxypeptidase B2; also CPU and TAFI) is a secreted,50-60 kDa glycoprotein member of the peptidase M14 family of enzymes. It is expressed by hepatocytes (60 kDa) and platelets (50 kDa),with MW differences attributable to glycosylation. CPB2 is cleaved by thrombin and plasmin,generating a 36 kDa,relatively insoluble nonglycosylated enzymatically active fragment (TAFIa).

For Research Use Only