

## Recombinant Mouse L-Selectin/SELL Protein (His Tag)

Catalog Number: PKSM041308

**Note:** Centrifuge before opening to ensure complete recovery of vial contents.

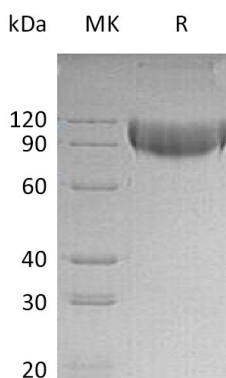
### Description

Species	Mouse
Source	HEK293 Cells-derived Mouse L-Selectin/SELL protein Trp39-Asn332, with an C-terminal His
Calculated MW	61 kDa
Observed MW	80-120 kDa
Accession	P18337
Bio-activity	Not validated for activity

### Properties

Purity	> 95 % as determined by reducing SDS-PAGE.
Endotoxin	< 1.0 EU per µg of the protein as determined by the LAL method.
Storage	Generally, lyophilized proteins are stable for up to 12 months when stored at -20 to -80 °C. Reconstituted protein solution can be stored at 4-8°C for 2-7 days. Aliquots of reconstituted samples are stable at < -20°C for 3 months.
Shipping	This product is provided as lyophilized powder which is shipped with ice packs.
Formulation	Lyophilized from a 0.2 µm filtered solution of 20mM PB, 150mM NaCl, pH7.4. Normally 5% - 8% trehalose, mannitol and 0.01% Tween 80 are added as protectants before lyophilization.
	Please refer to the specific buffer information in the printed manual.
Reconstitution	Please refer to the printed manual for detailed information.

### Data



### Background

L-Selectin is a member of a family of Selectin that is transiently expressed on vascular endothelial cells in response to IL-1 beta and TNF-alpha. L-Selectin (Leukocyte Selectin, LAM-1, LECAM-1, LECCAM-1, TQ1, Leu-8, MEL-14 antigen, DREG, lymph node homing receptor, CD62L) is expressed constitutively on a wide variety of leukocytes and mediates a number of leukocyte-endothelial interactions, including the binding of lymphocytes to HEV of peripheral lymph node high endothelial venules (HEV), neutrophil rolling, and leukocyte attachment to cytokine-treated endothelium in vitro.