

# RGS7 Polyclonal Antibody

Catalog Number: E-AB-61321



**Note:** Centrifuge before opening to ensure complete recovery of vial contents.

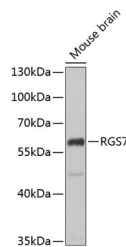
## Description

<b>Reactivity</b>	Human, Mouse, Rat
<b>Immunogen</b>	Recombinant fusion protein of human RGS7 (NP_002915.3).
<b>Host</b>	Rabbit
<b>Isotype</b>	IgG
<b>Purification</b>	Affinity purification
<b>Conjugation</b>	Unconjugated
<b>Formulation</b>	PBS with 0.02% sodium azide, 50% glycerol, pH7.3.

## Applications Recommended Dilution

<b>WB</b>	1:500-1:2000
-----------	--------------

## Data



Western blot analysis of extracts of Mouse brain using RGS7 Polyclonal Antibody at dilution of 1:1000.

**Observed Mw: 58kDa**

**Calculated Mw: 49kDa/54kDa/55kDa/56kDa/57kDa**

## Preparation & Storage

**Storage** Store at -20°C. Avoid freeze / thaw cycles.

## Background

RGS7 (Regulator Of G Protein Signaling 7) is a Protein Coding gene. Diseases associated with RGS7 include Prolonged Electroretinal Response Suppression and Congenital Stationary Night Blindness. Among its related pathways are Signaling by GPCR and Myometrial Relaxation and Contraction Pathways. Gene Ontology (GO) annotations related to this gene include obsolete signal transducer activity and G-protein beta-subunit binding. An important paralog of this gene is RGS6.

## For Research Use Only

A Reliable Research Partner in Life Science and Medicine

Toll-free: 1-888-852-8623

Web: [www.elabscience.com](http://www.elabscience.com)

Tel: 1-832-243-6086

Email: [techsupport@elabscience.com](mailto:techsupport@elabscience.com)

Fax: 1-832-243-6017