

Elab Fluor® 647 Anti-Mouse CD1d Antibody[19G11]

Catalog Number: E-AB-F1032UM

Note: Centrifuge before opening to ensure complete recovery of vial contents.

Description

Reactivity	Mouse
Host	Rat
Isotype	Rat IgG2b, κ
Clone No.	19G11
Isotype Control	Elab Fluor® 647 Rat IgG2b, κ Isotype Control[LTF-2] [Product E-AB-F09843M]
Conjugation	Elab Fluor® 647
Conjugation Information	Elab Fluor® 647 is designed to be excited by the Red laser (627-640 nm) and detected using an optical filter centered near 670 nm (e.g., a 660/20 nm bandpass filter).
Storage Buffer	Phosphate buffered solution, pH 7.2, containing 0.09% sodium azide and 1% BSA.

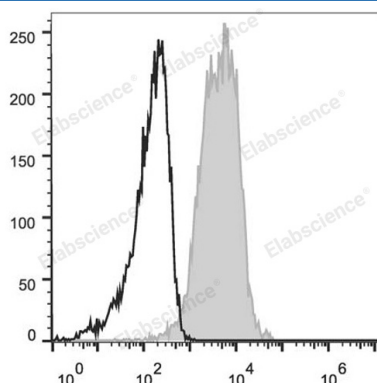
Applications

Recommended usage

FCM

Each lot of this antibody is quality control tested by flow cytometric analysis. Please check your vial before the experiment. Since applications vary, the appropriate dilutions must be determined for individual use. We suggest each investigator should titrate the reagent to obtain optimal results [The recommended concentration is 0.1-1 $\mu\text{g}/10^6$ cells in 100 μL volume].

Data



C57BL/6 murine splenocytes are stained with Elab Fluor® 647 Anti-Mouse CD1d Antibody (filled gray histogram).

Unstained splenocytes (empty black histogram) are used as control.

Preparation & Storage

Storage	Keep as concentrated solution. This product can be stored at 2-8°C for 12 months. Please protected from prolonged exposure to light and do not freeze.
Shipping	Ice bag

Antigen Information

Alternate Names	Antigen-presenting glycoprotein CD1d1;CD1d.1;Cd1.1;Cd1d1
Uniprot ID	P11609
Gene ID	12479

For Research Use Only

Background

CD1d is a type I transmembrane protein and member of the MHC family, with a molecular weight ranging from 43-49 kD, depending on the glycosylation degree. CD1d is expressed by antigen presenting cells such as dendritic cells, monocytes, macrophages and B cells; also expressed by thymocytes and intestinal epithelial cells. CD1d present glycolipids to iNKT cells that recognize them by their V α 14i TCR.