

Recombinant Human SNU13 Protein (His Tag)

Catalog Number: PKSH032810

Note: Centrifuge before opening to ensure complete recovery of vial contents.

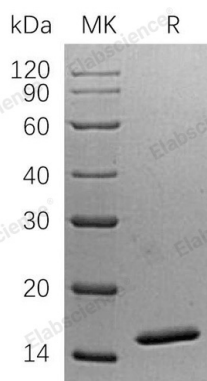
Description

Species	Human
Source	E.coli-derived Human SNU13 protein Met 1-Val128, with an N-terminal His
Calculated MW	16.3 kDa
Observed MW	16 kDa
Accession	P55769
Bio-activity	Not validated for activity

Properties

Purity	> 95 % as determined by reducing SDS-PAGE.
Endotoxin	< 1.0 EU per µg of the protein as determined by the LAL method.
Storage	Generally, lyophilized proteins are stable for up to 12 months when stored at -20 to -80°C. Reconstituted protein solution can be stored at 4-8°C for 2-7 days. Aliquots of reconstituted samples are stable at < -20°C for 3 months.
Shipping	This product is provided as lyophilized powder which is shipped with ice packs.
Formulation	Lyophilized from a 0.2 µm filtered solution of 20mM Tris-HCl, 600mM NaCl, pH 8.0. Normally 5% - 8% trehalose, mannitol and 0.01% Tween 80 are added as protectants before lyophilization.
Reconstitution	Please refer to the specific buffer information in the printed manual. Please refer to the printed manual for detailed information.

Data



> 95 % as determined by reducing SDS-PAGE.

Background

NHP2-Like Protein 1 (NHP2L1) is a member of the ribosomal protein L7Ae family. NHP2L1 protein is limited to the nucleus, primarily focused in the dense fibrillar component of the nucleolus. NHP2L1 has been shown to interact with RAD17 and PRPF31. The protein undergoes a conformational change upon RNA-binding. NHP2L1 binds to the 5-stem-loop of U4 snRNA and may play a role in the late stage of spliceosome assembly, prior to step I of splicing catalysis.

For Research Use Only

Toll-free: 1-888-852-8623
Web: www.elabscience.com

Tel: 1-832-243-6086
Email: techsupport@elabscience.com

Fax: 1-832-243-6017