

Recombinant Human ALDOC Protein (His Tag)

Catalog Number: PKSH032461

Note: Centrifuge before opening to ensure complete recovery of vial contents.

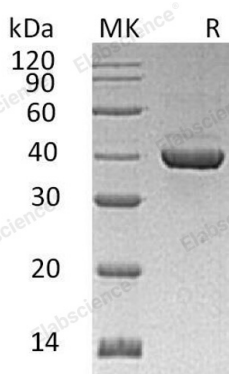
Description

Species	Human
Source	HEK293 Cells-derived Human ALDOC protein Phe2-Tyr364, with an C-terminal His
Calculated MW	40.3 kDa
Observed MW	40 kDa
Accession	P09972
Bio-activity	Not validated for activity

Properties

Purity	> 95 % as determined by reducing SDS-PAGE.
Concentration	Subject to label value.
Endotoxin	< 1.0 EU per µg of the protein as determined by the LAL method.
Storage	Store at < -20°C, stable for 6 months. Please minimize freeze-thaw cycles.
Shipping	This product is provided as liquid. It is shipped at frozen temperature with blue ice/ gel packs. Upon receipt, store it immediately at < - 20°C.
Formulation	Supplied as a 0.2 µm filtered solution of 20mM Tris-HCl, 100mM NaCl, 50% Glycerol, pH8.0.

Data



> 95 % as determined by reducing SDS-PAGE.

Background

Fructose-bisphosphate aldolase C (ALDOC) belongs to the class I fructose-bisphosphate aldolase family. It is an enzyme that, in humans, is encoded by the ALDOC gene. ALDOC is expressed exclusively in the hippocampus and Purkinje cells of the brain. ALDOC is a glycolytic enzyme which catalyzes the reversible aldol cleavage of fructose-1,6-biphosphate and fructose 1-phosphate to dihydroxyacetone phosphate and either glyceraldehyde-3-phosphate or glyceraldehydes respectively

For Research Use Only

Toll-free: 1-888-852-8623
Web: www.elabscience.com

Tel: 1-832-243-6086
Email: techsupport@elabscience.com

Fax: 1-832-243-6017