

HMGB1 Polyclonal Antibody

catalog number: E-AB-15716

Note: Centrifuge before opening to ensure complete recovery of vial contents.

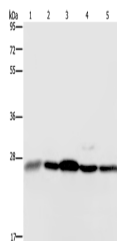
Description

Reactivity	Human;Mouse;Rat
Immunogen	Synthetic peptide of human HMGB1
Host	Rabbit
Isotype	IgG
Purification	Affinity purification
Buffer	Phosphate buffered solution, pH 7.4, containing 0.05% stabilizer and 50% glycerol.

Applications

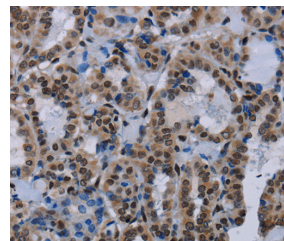
Applications	Recommended Dilution
WB	1:500-1:2000
IHC	1:50-1:200

Data



Western Blot analysis of Human hepatocellular carcinoma tissue, Hela and Jurkat cell, 293T cell and Human breast infiltrative duct tissue using HMGB1 Polyclonal Antibody at dilution of 1:200

Calculated-MW:25 kDa



Immunohistochemistry of paraffin-embedded Human thyroid cancer using HMGB1 Polyclonal Antibody at dilution of 1:30

Preparation & Storage

Storage	Store at -20°C Valid for 12 months. Avoid freeze / thaw cycles.
Shipping	The product is shipped with ice pack, upon receipt, store it immediately at the temperature recommended.

Background

High mobility group (HMG) proteins 1 and 2 are ubiquitous non-histone components of chromatin. Evidence suggests that the binding of HMG proteins to DNA induces alterations in the DNA architecture including DNA bending and unwinding of the helix. HMG proteins synergize with Oct-2, members of the NF- κ B family, ATF-2 and c-Jun to activate transcription. Other studies indicate that phosphorylation of HMG protein is required to stimulate the transcriptional activity of the protein. Human HMG-1 and HMG-2 both contain two DNA-binding domains, termed HMG boxes. HMG proteins bind single-stranded DNA but induce conformational changes in double-stranded DNA alone.

For Research Use Only