

LMCD1 Polyclonal Antibody

catalog number: E-AB-19000

Note: Centrifuge before opening to ensure complete recovery of vial contents.

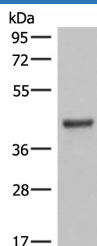
Description

Reactivity	Human;Mouse
Immunogen	Fusion protein of human LMCD1
Host	Rabbit
Isotype	IgG
Purification	Antigen affinity purification
Buffer	Phosphate buffered solution, pH 7.4, containing 0.05% stabilizer and 50% glycerol.

Applications

Applications	Recommended Dilution
WB	1:500-1:2000
IHC	1:50-1:300

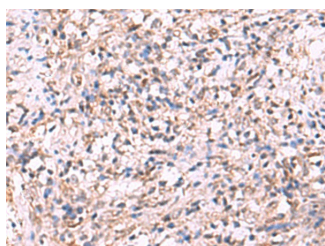
Data



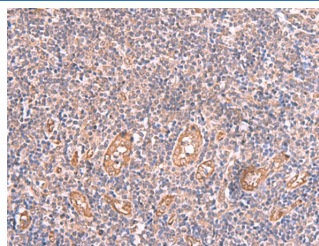
Western blot analysis of Mouse lung tissue lysates using LMCD1 Polyclonal Antibody at dilution of 1:550

Observed-MW:Refer to figures

Calculated-MW:41 kDa



Immunohistochemistry of paraffin-embedded Human cervical cancer tissue using LMCD1 Polyclonal Antibody at dilution of 1:100(×200)



Immunohistochemistry of paraffin-embedded Human tonsil tissue using LMCD1 Polyclonal Antibody at dilution of 1:100(×200)

Preparation & Storage

Storage	Store at -20°C Valid for 12 months. Avoid freeze / thaw cycles.
Shipping	The product is shipped with ice pack,upon receipt,store it immediately at the temperature recommended.

Background

For Research Use Only

This gene encodes a member of the LIM-domain family of zinc finger proteins. The encoded protein contains an N-terminal cysteine-rich domain and two C-terminal LIM domains. The presence of LIM domains suggests involvement in protein-protein interactions. The protein may act as a co-regulator of transcription along with other transcription factors. Alternate splicing results in multiple transcript variants of this gene.