

Recombinant Human DNA Polymerase β /POLB Protein (His Tag)

Catalog Number:PKSH032360



Note: Centrifuge before opening to ensure complete recovery of vial contents.

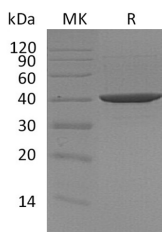
Description

Synonyms	DNA Polymerase Beta;POLB
Species	Human
Expression Host	E.coli
Sequence	Ser2-Glu335
Accession	P06746
Calculated Molecular Weight	39.2 kDa
Observed molecular weight	39 kDa
Tag	C-His

Properties

Purity	> 95 % as determined by reducing SDS-PAGE.
Endotoxin	< 1.0 EU per μ g of the protein as determined by the LAL method.
Storage	Store at < -20°C, stable for 6 months. Please minimize freeze-thaw cycles.
Shipping	This product is provided as liquid. It is shipped at frozen temperature with blue ice/gel packs. Upon receipt, store it immediately at < - 20°C.
Formulation	Supplied as a 0.2 μ m filtered solution of 20mM Tris-HCl, 100mM NaCl, 1mM DTT, 1mM EDTA, 50% Glycerol, pH 7.8.
Reconstitution	Not Applicable

Data



> 95 % as determined by reducing SDS-PAGE.

Background

Human DNA polymerase β is constitutively expressed in cells. It fills in gaps in DNA that are formed following base excision repair. Repair polymerase that plays a key role in base-excision repair. Has 5'-deoxyribose-5-phosphate lyase (dRP lyase) activity that removes the 5' sugar phosphate and also acts as a DNA polymerase that adds one nucleotide to the 3' end of the arising single-nucleotide gap. It conducts 'gap-filling' DNA synthesis in a stepwise distributive fashion rather than in a processive fashion as for other DNA polymerases. The activity cannot be affected by Aphidicolin, which is an inhibitor of DNA polymerase β .

For Research Use Only

A Reliable Research Partner in Life Science and Medicine

Toll-free: 1-888-852-8623

Web: www.elabscience.com

Tel: 1-832-243-6086

Email: techsupport@elabscience.com

Fax: 1-832-243-6017