

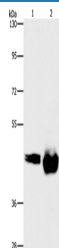
## CD38 Polyclonal Antibody

catalog number: E-AB-16317

**Note:** Centrifuge before opening to ensure complete recovery of vial contents.

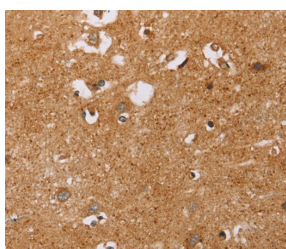
Description	
Reactivity	Human
Immunogen	Synthetic peptide of human CD38
Host	Rabbit
Isotype	IgG
Purification	Affinity purification
Conjugation	Unconjugated
Buffer	Phosphate buffered solution, pH 7.4, containing 0.05% stabilizer and 50% glycerol.
Applications	Recommended Dilution
WB	1:500-1:2000
IHC	1:50-1:200

## Data

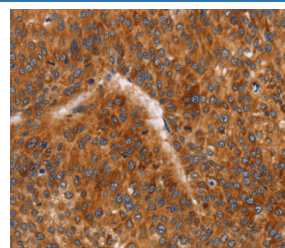


Western Blot analysis of A549 and Raji cell using CD38 Polyclonal Antibody at dilution of 1:520

Calculated-MW:34 kDa



Immunohistochemistry of paraffin-embedded Human brain using CD38 Polyclonal Antibody at dilution of 1:60



Immunohistochemistry of paraffin-embedded Human liver cancer using CD38 Polyclonal Antibody at dilution of 1:60

Preparation & Storage	
Storage	Store at -20°C Valid for 12 months. Avoid freeze / thaw cycles.
Shipping	The product is shipped with ice pack, upon receipt, store it immediately at the temperature recommended.

**Background**

CD38 is a novel multifunctional ectoenzyme widely expressed in cells and tissues especially in leukocytes. CD38 also functions in cell adhesion, signal transduction and calcium signaling. Synthesizes cyclic ADP-ribose, a second messenger for glucose-induced insulin secretion. Also has cADPr hydrolase activity. Also moonlights as a receptor in cells of the immune system.

## For Research Use Only