

PPIC Polyclonal Antibody

Catalog Number: E-AB-53088



Note: Centrifuge before opening to ensure complete recovery of vial contents.

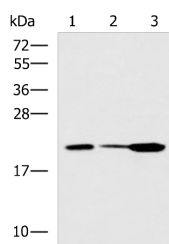
Description

Reactivity	Human, Mouse
Immunogen	Fusion protein of human PPIC
Host	Rabbit
Isotype	IgG
Purification	Antigen affinity purification
Conjugation	Unconjugated
Formulation	PBS with 0.05% NaN3 and 40% Glycerol, pH7.4

Applications Recommended Dilution

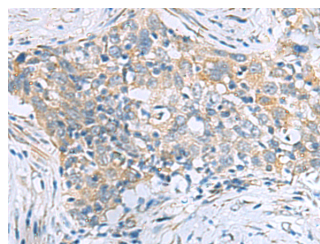
WB	1:500-1:2000
IHC	1:50-1:100
ELISA	1:5000-1:10000

Data

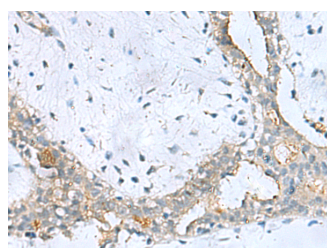


Western blot analysis of Mouse small intestines tissue
Mouse kidney tissue Mouse pancreas tissue lysates
using PPIC Polyclonal Antibody at dilution of 1:550

Observed Mw: Refer to figures
Calculated Mw: 23 kDa



Immunohistochemistry of paraffin-embedded
Human esophagus cancer tissue using PPIC
Polyclonal Antibody at dilution of 1:50 (x200)



Immunohistochemistry of paraffin-embedded
Human breast cancer tissue using PPIC Polyclonal
Antibody at dilution of 1:50 (x200)

Preparation & Storage

Storage Store at -20°C. Avoid freeze / thaw cycles.

Background

For Research Use Only

A Reliable Research Partner in Life Science and Medicine

Toll-free: 1-888-852-8623

Web: www.elabscience.com

Tel: 1-832-243-6086

Email: techsupport@elabscience.com

Fax: 1-832-243-6017

PPIC Polyclonal Antibody

Catalog Number: E-AB-53088



The protein encoded by this gene is a member of the peptidyl-prolyl cis-trans isomerase (PPIase) family. PPIases catalyze the cis-trans isomerization of proline imidic peptide bonds in oligopeptides and accelerate the folding of proteins. Similar to other PPIases, this protein can bind immunosuppressant cyclosporin A.

For Research Use Only

A Reliable Research Partner in Life Science and Medicine

Toll-free: 1-888-852-8623

Tel: 1-832-243-6086

Fax: 1-832-243-6017

Web: www.elabscience.com

Email: techsupport@elabscience.com