

Recombinant Human Testin/TES Protein (His Tag)

Catalog Number: PKSH033102

Note: Centrifuge before opening to ensure complete recovery of vial contents.

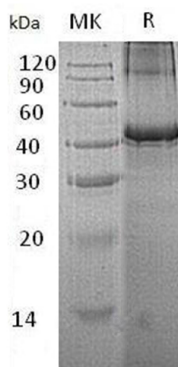
Description

| | |
|----------------------|--|
| Species | Human |
| Source | E.coli-derived Human Testin;TES protein Met 1-Ser421, with an C-terminal His |
| Calculated MW | 49.1 kDa |
| Observed MW | 50 kDa |
| Accession | Q9UGI8 |
| Bio-activity | Not validated for activity |

Properties

| | |
|----------------------|--|
| Purity | > 95 % as determined by reducing SDS-PAGE. |
| Concentration | Subject to label value. |
| Endotoxin | < 1.0 EU per µg of the protein as determined by the LAL method. |
| Storage | Store at < -20°C, stable for 6 months. Please minimize freeze-thaw cycles. |
| Shipping | This product is provided as liquid. It is shipped at frozen temperature with blue ice/gel packs. Upon receipt, store it immediately at < - 20°C. |
| Formulation | Supplied as a 0.2 µm filtered solution of PBS, 1mM DTT, 10% Glycerol, pH 7.5. |

Data



> 95 % as determined by reducing SDS-PAGE.

Background

Testin belongs to the prickle/espinas/testin family. Testin contains three LIM zinc-binding domains and one PET domain, TES as a scaffold protein that may have a role in cell adhesion, cell spreading and in the reorganization of the actin cytoskeleton. In addition, TES can also as a tumor suppressor, inhibits tumor cell growth, regulate the cell proliferation. TES interacts with many cytoskeletal proteins, such as Zyxin, Mena, Actin, Talin and VASP. The ability of TES to associate with alpha-actin, Zyxin and paxillin is dependent on the conformational state of the molecule.

For Research Use Only

Toll-free: 1-888-852-8623
Web: www.elabscience.com

Tel: 1-832-243-6086
Email: techsupport@elabscience.com

Fax: 1-832-243-6017