

Cystatin C Polyclonal Antibody(Capture/Detector)

catalog number: AN000020P

Note: Centrifuge before opening to ensure complete recovery of vial contents.

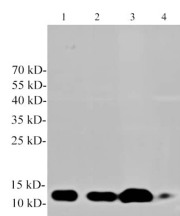
Description

Reactivity	Human;Mouse;Rat
Immunogen	Recombinant Human Cystatin C protein expressed by E.coli
Host	Rabbit
Isotype	Rabbit IgG
Purification	Antigen Affinity Purification
Conjugation	Unconjugated
buffer	Phosphate buffered solution, pH 7.2, containing 0.05% proclin 300.

Applications

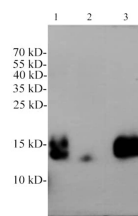
Applications	Recommended Dilution
WB	1:1000-1:2000
ELISA Capture	2-8 µg/mL
ELISA Detector	0.1-0.4 µg/mL

Data



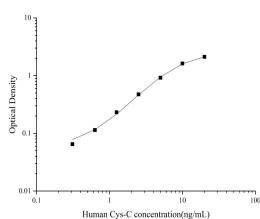
Western Blot with Cystatin C Polyclonal Antibody at dilution of 1:1000. Lane 1: HepG2 cell lysate, Lane 2: PC-3 cell lysate, Lane 3: CaCo2 cell lysate, Lane 4: Mouse kidney lysate.

Observed-MV:13 kDa
Calculated-MV:13 kDa



Western Blot with Cystatin C Polyclonal Antibody at dilution of 1:1000. Lane 1: Rat kidney lysate, Lane 2: Rat liver lysate, Lane 3: Rat plasma.

Observed-MV:13 kDa
Calculated-MV:13 kDa



Sandwich ELISA-Recombinant Human Cystatin C protein standard curve. Background subtracted standard curve using Cystatin C antibody(AN000020P)(Capture), Cystatin C antibody(AN000020P)(Detector) in sandwich ELISA. The reference range value for Recombinant Human Cystatin C protein is 0.313-200 ng/mL.

Preparation & Storage

Storage Store at 4°C valid for 12 months or -20°C valid for long term storage, avoid freeze / thaw cycles.

For Research Use Only

Cystatin C Polyclonal Antibody(Capture/Detector)

catalog number: AN000020P



Shipping

The product is shipped with ice pack, upon receipt, store it immediately at the temperature recommended.

Background

Cystatin C is a member of family 2 of the Cystatin superfamily . It is involved in processes such as tumor invasion and metastasis, inflammation and some neurological diseases. It inhibits many cysteine proteases such as papain and cathepsins B,H,K,I, and S.

For Research Use Only

A Reliable Research Partner in Life Science and Medicine
Tel: 400-999-2100

Email: techsupport@elabscience.cn

Web: www.elabscience.cn

Rev. V1.6