

Recombinant Human LRRC3B Protein (His Tag)

Catalog Number: PKSH032692

Note: Centrifuge before opening to ensure complete recovery of vial contents.

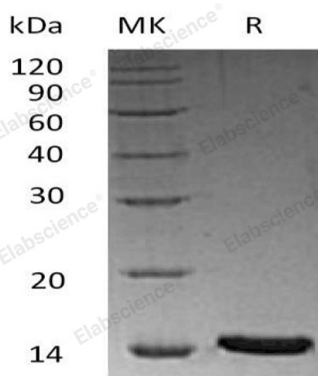
Description

| | |
|----------------------|--|
| Species | Human |
| Source | HEK293 Cells-derived Human LRRC3B protein Cys34-Tyr204, with an C-terminal His |
| Calculated MW | 20.0 kDa |
| Observed MW | 52 kDa |
| Accession | Q96PB8 |
| Bio-activity | Not validated for activity |

Properties

| | |
|-----------------------|--|
| Purity | > 95 % as determined by reducing SDS-PAGE. |
| Endotoxin | < 1.0 EU per µg of the protein as determined by the LAL method. |
| Storage | Generally, lyophilized proteins are stable for up to 12 months when stored at -20 to -80 °C. Reconstituted protein solution can be stored at 4-8°C for 2-7 days. Aliquots of reconstituted samples are stable at < -20°C for 3 months. |
| Shipping | This product is provided as lyophilized powder which is shipped with ice packs. |
| Formulation | Lyophilized from a 0.2 µm filtered solution of 20mM Tris-HCl, 150mM NaCl, pH 8.0. Normally 5% - 8% trehalose, mannitol and 0.01% Tween 80 are added as protectants before lyophilization. |
| Reconstitution | Please refer to the specific buffer information in the printed manual. |

Data



> 95 % as determined by reducing SDS-PAGE.

Background

Leucine-Rich Repeat-Containing Protein 3B (LRRC3B) belongs to the LRRC3 family. LRRC3B is single-pass membrane protein and contains three leucine-rich repeats, one LRRCT domain, and one LRRNT domain. LRR-containing proteins, of which there are greater than 2,000, participate in many important processes, including plant and animal immunity, hormone-receptor interactions, cell adhesion, signal transduction, regulation of gene expression, and apoptosis. A number of microarray expression profiling studies on human cancers have shown that LRRC3B is down-regulated in gastric, breast, colon, testis, prostate and brain cancers, suggesting LRRC3B involvement in carcinogenesis.

For Research Use Only