

## Recombinant Mouse Trefoil Factor 1/TFF1 Protein (His Tag)

Catalog Number: PKSM041269

**Note:** Centrifuge before opening to ensure complete recovery of vial contents.

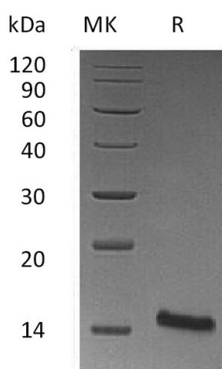
### Description

Species	Mouse
Source	HEK293 Cells-derived Mouse Trefoil Factor 1/TFF1 protein Gln22-Phe87, with an C-terminal His
Calculated MW	8.3 kDa
Observed MW	15 kDa
Accession	Q08423
Bio-activity	Not validated for activity

### Properties

Purity	> 95 % as determined by reducing SDS-PAGE.
Endotoxin	< 1.0 EU per µg of the protein as determined by the LAL method.
Storage	Generally, lyophilized proteins are stable for up to 12 months when stored at -20 to -80 °C. Reconstituted protein solution can be stored at 4-8°C for 2-7 days. Aliquots of reconstituted samples are stable at < -20°C for 3 months.
Shipping	This product is provided as lyophilized powder which is shipped with ice packs.
Formulation	Lyophilized from a 0.2 µm filtered solution of PBS, pH 7.4. Normally 5% - 8% trehalose, mannitol and 0.01% Tween 80 are added as protectants before lyophilization.
Reconstitution	Please refer to the specific buffer information in the printed manual. Please refer to the printed manual for detailed information.

### Data



### Background

Trefoil Factor 1 (TFF1) belongs to the three structurally related secreted proteins that contain trefoil domains. TFF1 is an approximately peptide that has an important effect in epithelial regeneration and wound healing. It originates from musculus and highly expressed by goblet cells of the gastric and intestinal mucosa and by conjunctival goblet cells. TFF1 is a copper-binding protein that can form disulfide-linked homodimers, associate into disulfide-linked complexes with Gastrokine 2, and form non-covalent complexes with the mucin MUC5AC. TFF1 is down-regulated during the progression from gastritis to gastric dysplasia to gastric cancer, although it is up-regulated in breast and prostate cancers. TFF1 inhibits the formation of calcium oxalate crystals, and its excretion in the urine is reduced in patients with kidney stones.