

## ISL2 Polyclonal Antibody

catalog number: **E-AB-52044**

**Note:** Centrifuge before opening to ensure complete recovery of vial contents.

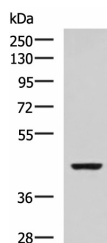
### Description

<b>Reactivity</b>	Human;Mouse;Rat
<b>Immunogen</b>	Synthetic peptide of human ISL2
<b>Host</b>	Rabbit
<b>Isotype</b>	IgG
<b>Purification</b>	Antigen affinity purification
<b>Buffer</b>	Phosphate buffered solution, pH 7.4, containing 0.05% stabilizer and 50% glycerol.

### Applications Recommended Dilution

<b>WB</b>	1:500-1:2000
-----------	--------------

### Data



Western blot analysis of SP20 cell lysate using ISL2  
Polyclonal Antibody at dilution of 1:800

**Observed-MW:Refer to figures**

**Calculated-MW:40 kDa**

### Preparation & Storage

<b>Storage</b>	Store at -20°C Valid for 12 months. Avoid freeze / thaw cycles.
<b>Shipping</b>	The product is shipped with ice pack,upon receipt,store it immediately at the temperature recommended.

### Background

ISL2 (ISL LIM Homeobox 2) is a Protein Coding gene.Among its related pathways are Neural Stem Cell Differentiation Pathways and Lineage-specific Markers.Gene Ontology (GO) annotations related to this gene include sequence-specific DNA binding.An important paralog of this gene is ISL1.

### For Research Use Only