

## Recombinant Human ZBP1 Protein (His Tag)

**Catalog Number:** PKSH033231

**Note:** Centrifuge before opening to ensure complete recovery of vial contents.

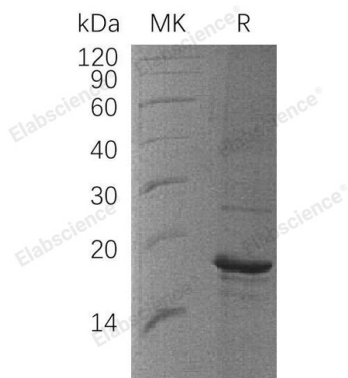
### Description

<b>Species</b>	Human
<b>Source</b>	E.coli-derived Human ZBP1 protein Met 1-Ser149, with an C-terminal His
<b>Calculated MW</b>	17.5 kDa
<b>Observed MW</b>	16-23 kDa
<b>Accession</b>	Q9H171
<b>Bio-activity</b>	Not validated for activity

### Properties

<b>Purity</b>	> 90 % as determined by reducing SDS-PAGE.
<b>Endotoxin</b>	< 1.0 EU per µg of the protein as determined by the LAL method.
<b>Storage</b>	Generally, lyophilized proteins are stable for up to 12 months when stored at -20 to -80 °C. Reconstituted protein solution can be stored at 4-8°C for 2-7 days. Aliquots of reconstituted samples are stable at < -20°C for 3 months.
<b>Shipping</b>	This product is provided as lyophilized powder which is shipped with ice packs.
<b>Formulation</b>	Lyophilized from a 0.2 µm filtered solution of PBS, pH 7.4. Normally 5% - 8% trehalose, mannitol and 0.01% Tween 80 are added as protectants before lyophilization. Please refer to the specific buffer information in the printed manual.
<b>Reconstitution</b>	Please refer to the printed manual for detailed information.

### Data



> 90 % as determined by reducing SDS-PAGE.

### Background

Z-DNA Binding Protein 1 (ZBP1) is a protein with 2 DRADA repeats. ZBP1 is highly expressed in lymphatic tissues including lymph node, leukocytes, tonsil, bone marrow, and spleen. ZBP1 participates in the detection of viral and bacterial DNA from by the host's innate immune system. It plays a role in host defense against tumors and pathogens. ZBP1 Acts as a cytoplasmic DNA sensor which, when activated, induces the recruitment of TBK1 and IRF3 to its C-terminal region and activates the downstream interferon regulatory factor (IRF) and NF-kappa B transcription factors, leading to type-I interferon production. ZBP1-induced NF-kappaB activation probably involves the recruitment of the RHIM containing kinases RIPK1 and RIPK3.

### For Research Use Only