

Recombinant Eg5 Monoclonal Antibody

catalog number: **E-AB-81504**

Note: Centrifuge before opening to ensure complete recovery of vial contents.

Description

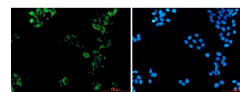
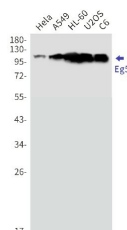
Reactivity	Human;Mouse;Rat
Immunogen	Recombinant protein of human Eg5
Host	Rabbit
Isotype	IgG
Clone	R02-3H5
Purification	Affinity Purified
Buffer	50mM Tris-Glycine(pH 7.4), 0.15M NaCl, 40% Glycerol, 0.05% stabilizer and 0.05% protective protein.

Applications

Recommended Dilution

WB	1:500-1:1000
IF	1:50-1:100

Data



Western blot detection of Eg5 in HeLa, A549, HL-60, U2OS, C6 Immunofluorescence of Eg5 (green) in heLa using Eg5 Rabbit cell lysates using Eg5 Rabbit mAb(1:1000 diluted). Predicted band size: 119kDa. Observed band size: 119kDa. mAb at dilution 1:50, and DAPI(blue)

Observed-MW: 119 kDa

Calculated-MW: 119 kDa

Preparation & Storage

Storage	Store at -20°C Valid for 12 months. Avoid freeze / thaw cycles.
Shipping	The product is shipped with ice pack, upon receipt, store it immediately at the temperature recommended.

Background

This gene encodes a motor protein that belongs to the kinesin-like protein family. Members of this protein family are known to be involved in various kinds of spindle dynamics. The function of this gene product includes chromosome positioning, centrosome separation and establishing a bipolar spindle during cell mitosis.

For Research Use Only