

# EFNB1 Polyclonal Antibody

Catalog Number: E-AB-53525



**Note:** Centrifuge before opening to ensure complete recovery of vial contents.

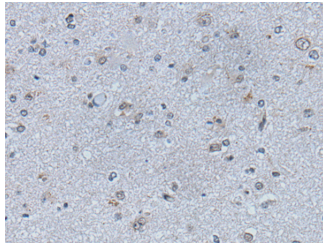
## Description

<b>Reactivity</b>	Human, Mouse, Rat
<b>Immunogen</b>	Synthetic peptide of human EFNB1
<b>Host</b>	Rabbit
<b>Isotype</b>	IgG
<b>Purification</b>	Antigen affinity purification
<b>Conjugation</b>	Unconjugated
<b>Formulation</b>	PBS with 0.05% NaN <sub>3</sub> and 40% Glycerol, pH7.4

## Applications Recommended Dilution

<b>IHC</b>	1:30-1:150
<b>ELISA</b>	1:5000-1:10000

## Data



Immunohistochemistry of paraffin-embedded Human brain tissue using EFNB1 Polyclonal Antibody at dilution of 1:50(×200)

## Preparation & Storage

**Storage** Store at -20°C. Avoid freeze / thaw cycles.

## Background

Ephrin B proteins are thought to play key roles in cellular functions as diverse as neuronal migration and blood vessel development. Ephrin B molecules expressed at the membrane surface bind to the Ephrin B family receptors on target cells during cell to cell contact. This interaction leads to cell signaling in the target cell but also generates a reverse signal in the cell expressing Ephrin B on its surface. This reverse signaling event is thought to be critical for vessel maturation and neuronal development. Importantly, tyrosine phosphorylation of Ephrin B is thought to be a critical component of this reverse signaling event. Recent work demonstrated that Tyr331 of Ephrin B was phosphorylated in HEK293 cells after stimulation by the soluble Ephrin B2 receptor tyrosine kinase.

## For Research Use Only

A Reliable Research Partner in Life Science and Medicine

Toll-free: 1-888-852-8623

Web: [www.elabscience.com](http://www.elabscience.com)

Tel: 1-832-243-6086

Email: [techsupport@elabscience.com](mailto:techsupport@elabscience.com)

Fax: 1-832-243-6017