

Recombinant Human DCXR Protein (His Tag)

Catalog Number:PKSH032714



Note: Centrifuge before opening to ensure complete recovery of vial contents.

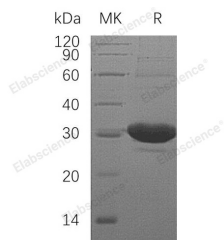
Description

Synonyms	L-Xylulose Reductase;XR;Carbonyl Reductase II;Dicarbonyl/L-Xylulose Reductase;Kidney Dicarbonyl Reductase;kiDCR;Sperm Surface Protein P34H;DCXR
Species	Human
Expression Host	E.coli
Sequence	Met 1-Cys244
Accession	Q7Z4W1
Calculated Molecular Weight	28.1 kDa
Observed molecular weight	29 kDa
Tag	N-His

Properties

Purity	> 95 % as determined by reducing SDS-PAGE.
Endotoxin	< 1.0 EU per µg of the protein as determined by the LAL method.
Storage	Store at < -20°C, stable for 6 months. Please minimize freeze-thaw cycles.
Shipping	This product is provided as liquid. It is shipped at frozen temperature with blue ice/gel packs. Upon receipt, store it immediately at < - 20°C.
Formulation	Supplied as a 0.2 µm filtered solution of 50mM Tris, 150mM NaCl, 1mM DTT, 30% Glycerol, 1mM DTT, pH 8.0.
Reconstitution	Not Applicable

Data



> 95 % as determined by reducing SDS-PAGE.

Background

L-Xylulose Reductase is an enzyme that belongs to the Short-Chain Dehydrogenases/Reductases (SDR) family. L-Xylulose Reductase is responsible for the metabolism of Xylulose, converting it into Xylitol. L-Xylulose Reductase catalyzes the NADPH-dependent reduction of several Pentoses, Tetroses, Trioses, α -Dicarbonyl compounds and L-Xylulose. L-Xylulose Reductase participates in the Uronate Cycle of Glucose metabolism. It may play a role in the water absorption and cellular osmoregulation in the proximal renal tubules by producing Xylitol, an osmolyte, thereby preventing osmolytic stress from occurring in the renal tubules.

For Research Use Only

A Reliable Research Partner in Life Science and Medicine

Toll-free: 1-888-852-8623

Web: www.elabscience.com

Tel: 1-832-243-6086

Email: techsupport@elabscience.com

Fax: 1-832-243-6017