

PE Anti-Mouse CD11a Antibody[FD441.8]

Catalog Number: E-AB-F1033D

Note: Centrifuge before opening to ensure complete recovery of vial contents.

Description

Reactivity	Mouse
Host	Rat
Isotype	Rat IgG2b, κ
Clone No.	FD441.8
Isotype Control	PE Rat IgG2b, κ Isotype Control[LTF-2] [Product E-AB-F09842D]
Conjugation	PE
Conjugation Information	PE is designed to be excited by the Blue (488 nm), Green (532 nm) and Yellow-Green (561 nm) lasers and detected using an optical filter centered near 575 nm (e.g., a 585/42 nm bandpass filter).
Storage Buffer	Phosphate buffered solution, pH 7.2, containing 0.09% stabilizer.

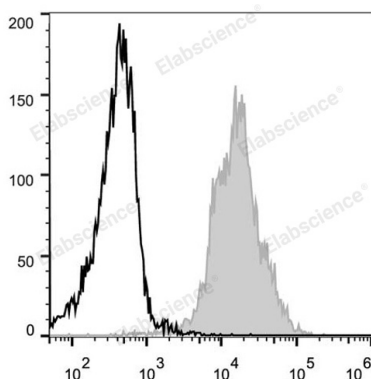
Applications

FCM

Recommended usage

Each lot of this antibody is quality control tested by flow cytometric analysis. **The amount of the reagent is suggested to be used 5 μ L of antibody per test (million cells in 100 μ L staining volume or per 100 μ L of whole blood).** Please check your vial before the experiment. Since applications vary, the appropriate dilutions must be determined for individual use.

Data



C57BL/6 murine splenocytes are stained with PE Anti-Mouse CD11a Antibody (filled gray histogram). Unstained splenocytes (empty black histogram) are used as control.

Preparation & Storage

Storage	Keep as concentrated solution. This product can be stored at 2-8°C for 24 months. Please protected from prolonged exposure to light and do not freeze.
Shipping	Ice bag

Antigen Information

Alternate Names	CD11 antigen-like family member A;CD11a;Integrin alpha-L;Itgal;LFA-1A;Ly-15; Lymphocyte antigen 15
Uniprot ID	P24063
Gene ID	16408

For Research Use Only

Background

CD11a is a 180 kD glycoprotein, also known as α L integrin, LFA-1 α , Ly-15, or Ly-21. It is a member of the integrin family, primarily expressed on lymphocytes, monocytes/macrophages, and granulocytes. In association with CD18, the CD11a/CD18 complex forms LFA-1. CD11a plays an important role in intercellular adhesion and costimulation by binding its ligands, ICAM-1 (CD54), ICAM-2 (CD102), and ICAM-3 (CD50).