

# CD22 Polyclonal Antibody

Catalog Number: E-AB-14843



**Note:** Centrifuge before opening to ensure complete recovery of vial contents.

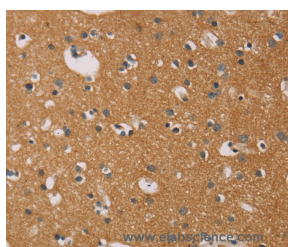
## Description

|                     |   |
|---------------------|---|
| <b>Reactivity</b>   | Human   |
| <b>Immunogen</b>    | Recombinant protein of human CD22                   |
| <b>Host</b>         | Rabbit  |
| <b>Isotype</b>      | IgG   |
| <b>Purification</b> | Affinity purification                               |
| <b>Conjugation</b>  | Unconjugated  |
| <b>Formulation</b>  | PBS with 0.05% sodium azide and 50% glycerol, PH7.4 |

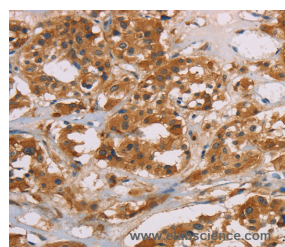
## Applications Recommended Dilution

|            |            |
|------------|------------|
| <b>IHC</b> | 1:50-1:200 |
|------------|------------|

## Data



Immunohistochemistry of paraffin-embedded Human brain tissue using CD22 Polyclonal Antibody at dilution 1:50



Immunohistochemistry of paraffin-embedded Human thyroid cancer tissue using CD22 Polyclonal Antibody at dilution 1:50

## Preparation & Storage

**Storage** Store at -20°C. Avoid freeze / thaw cycles.

## Background

The B lymphocyte specific CD22 antigen, also designated B-lymphocyte cell adhesion molecule (BLCAM), sialic acid-binding Ig-like lectin 2 (Siglec-2) and Leu-14, is a type I integral membrane glycoprotein, structurally similar to other cell adhesion molecules (CAMs), which acts as a regulator of B cell signaling. CD22 is expressed as both a cytoplasmic and membrane protein during discrete stages of B cell lymphocyte differentiation. The cytoplasmic form of CD22, expressed early in B cell development, is a useful marker for acute lymphocytic leukemia. The membrane form of CD22 is expressed in mature B cells prior to their differentiation into plasma cells.

## For Research Use Only

A Reliable Research Partner in Life Science and Medicine

Toll-free: 1-888-852-8623

Web: [www.elabscience.com](http://www.elabscience.com)

Tel: 1-832-243-6086

Email: [techsupport@elabscience.com](mailto:techsupport@elabscience.com)

Fax: 1-832-243-6017