

## UBE2U Polyclonal Antibody

**catalog number: E-AB-62576**

**Note:** Centrifuge before opening to ensure complete recovery of vial contents.

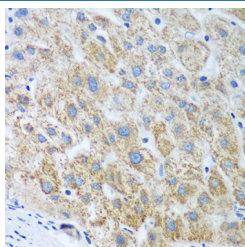
### Description

<b>Reactivity</b>	Human;Mouse
<b>Immunogen</b>	Recombinant fusion protein of human UBE2U (NP_689702.1).
<b>Host</b>	Rabbit
<b>Isotype</b>	IgG
<b>Purification</b>	Affinity purification
<b>Buffer</b>	Phosphate buffered solution, pH 7.4, containing 0.05% stabilizer and 50% glycerol.

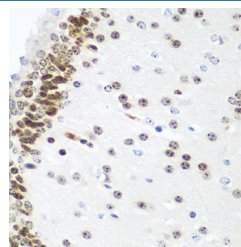
### Applications Recommended Dilution

<b>IHC</b>	1:50-1:100
------------	------------

### Data



Immunohistochemistry of paraffin-embedded Human liver using UBE2U Polyclonal Antibody at dilution of 1:100 (40x lens).



Immunohistochemistry of paraffin-embedded Mouse brain using UBE2U Polyclonal Antibody at dilution of 1:100 (40x lens).

### Preparation & Storage

<b>Storage</b>	Store at -20°C Valid for 12 months. Avoid freeze / thaw cycles.
<b>Shipping</b>	The product is shipped with ice pack, upon receipt, store it immediately at the temperature recommended.

### Background

UBE2U (Ubiquitin Conjugating Enzyme E2 U) is a Protein Coding gene. Diseases associated with UBE2U include Brachydactyly, Type E2. Among its related pathways are Remodeling of Adherens Junctions and Innate Immune System. Gene Ontology (GO) annotations related to this gene include ligase activity and ubiquitin protein ligase activity. An important paralog of this gene is UBE2B.

### For Research Use Only