

Glucagon Receptor Polyclonal Antibody

catalog number: E-AB-13269

Note: Centrifuge before opening to ensure complete recovery of vial contents.

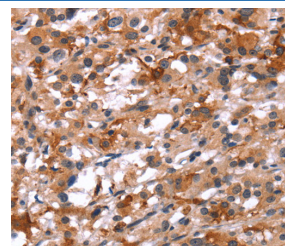
Description

Reactivity	Human;Mouse;Rat
Immunogen	Synthetic peptide of human GCGR
Host	Rabbit
Isotype	IgG
Purification	Affinity purification
Buffer	Phosphate buffered solution, pH 7.4, containing 0.05% stabilizer and 50% glycerol.

Applications

Applications	Recommended Dilution
WB	1:200-1:1000
IHC	1:50-1:200

Data



Western Blot analysis of 293T cell using Glucagon Receptor Polyclonal Antibody at dilution of 1:200
Calculated-MW:54 kDa

Immunohistochemistry of paraffin-embedded Human thyroid cancer using Glucagon Receptor Polyclonal Antibody at dilution of 1:40

Preparation & Storage

Storage	Store at -20°C Valid for 12 months. Avoid freeze / thaw cycles.
Shipping	The product is shipped with ice pack, upon receipt, store it immediately at the temperature recommended.

Background

The protein encoded by this gene is a glucagon receptor that is important in controlling blood glucose levels. Defects in this gene are a cause of non-insulin-dependent diabetes mellitus (NIDDM).

For Research Use Only