

METAP1D Polyclonal Antibody

Catalog Number:E-AB-52286



Note: Centrifuge before opening to ensure complete recovery of vial contents.

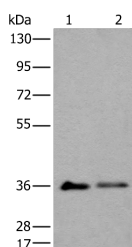
Description

Reactivity	Human, Mouse
Immunogen	Fusion protein of human METAP1D
Host	Rabbit
Isotype	IgG
Purification	Antigen affinity purification
Conjugation	Unconjugated
Formulation	PBS with 0.05% NaN ₃ and 40% Glycerol,pH7.4

Applications Recommended Dilution

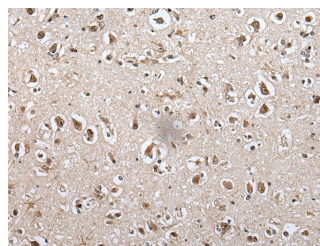
WB	1:500-1:2000
IHC	1:40-1:200
ELISA	1:5000-1:10000

Data

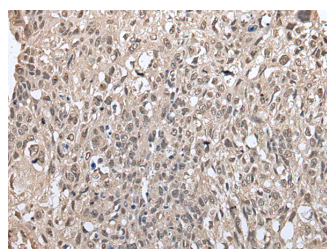


Western blot analysis of 293T cell lysates using METAP1D Polyclonal Antibody at dilution of 1:600

Observed Mw:Refer to figures
Calculated Mw:37 kDa



Immunohistochemistry of paraffin-embedded Human brain tissue using METAP1D Polyclonal Antibody at dilution of 1:60(×200)



Immunohistochemistry of paraffin-embedded Human lung cancer tissue using METAP1D Polyclonal Antibody at dilution of 1:60(×200)

Preparation & Storage

Storage Store at -20°C. Avoid freeze / thaw cycles.

Background

The N-terminal methionine excision pathway is an essential process in which the N-terminal methionine is removed from

For Research Use Only

A Reliable Research Partner in Life Science and Medicine

Toll-free: 1-888-852-8623

Web: www.elabscience.com

Tel: 1-832-243-6086

Email: techsupport@elabscience.com

Fax: 1-832-243-6017

METAP1D Polyclonal Antibody

Catalog Number: E-AB-52286



many proteins, thus facilitating subsequent protein modification. In mitochondria, enzymes that catalyze this reaction are called methionine aminopeptidases (MetAps, or MAPs; EC 3.4.11.18) (Serero et al., 2003 [PubMed 14532271])

For Research Use Only

A Reliable Research Partner in Life Science and Medicine

Toll-free: 1-888-852-8623

Tel: 1-832-243-6086

Fax: 1-832-243-6017

Web: www.elabscience.com

Email: techsupport@elabscience.com