

# KCNIP1 Polyclonal Antibody

catalog number: E-AB-18164

**Note:** Centrifuge before opening to ensure complete recovery of vial contents.

## Description

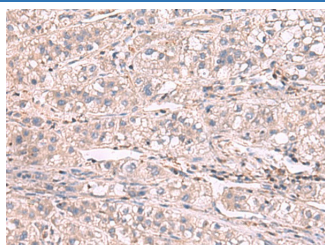
<b>Reactivity</b>	Human;Mouse;Rat
<b>Immunogen</b>	Synthetic peptide of human KCNIP1
<b>Host</b>	Rabbit
<b>Isotype</b>	IgG
<b>Purification</b>	Antigen affinity purification
<b>Conjugation</b>	Unconjugated
<b>buffer</b>	Phosphate buffered solution, pH 7.4, containing 0.05% stabilizer and 50% glycerol.

## Applications

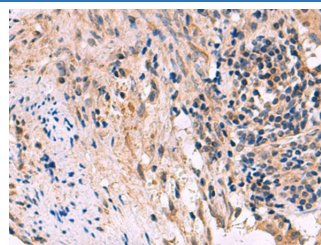
## Recommended Dilution

<b>IHC</b>	1:50-1:300
------------	------------

## Data



Immunohistochemistry of paraffin-embedded Human liver cancer tissue using KCNIP1 Polyclonal Antibody at dilution of 1:60(×200)



Immunohistochemistry of paraffin-embedded Human cervical cancer tissue using KCNIP1 Polyclonal Antibody at dilution of 1:60(×200)

## Preparation & Storage

<b>Storage</b>	Store at -20°C Valid for 12 months. Avoid freeze / thaw cycles.
<b>Shipping</b>	The product is shipped with ice pack,upon receipt,store it immediately at the temperature recommended.

## Background

Human K(v) channel interacting protein 1 (KCHIP1) is a new member of the neural calcium binding protein superfamily. Members of the KCNIP family are small calcium binding proteins. They all have EF-hand-like domains, and differ from each other in the N-terminus. They are integral subunit components of native Kv4 channel complexes. They may regulate A-type currents, and hence neuronal excitability, in response to changes in intracellular calcium. KCHIP1 is a neuronal calcium sensor protein that is predominantly expressed at GABAergic synapses and it has been related with modulation of K(+) channels, GABAergic transmission and cell death.

## For Research Use Only