

Phospho-CAMK2 beta/gamma/delta (Thr287) Monoclonal Antibody

catalog number: E-AB-51035



Note: Centrifuge before opening to ensure complete recovery of vial contents.

Description

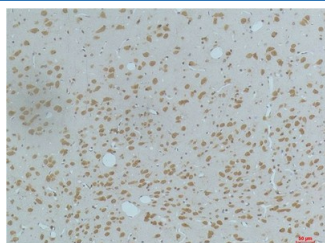
Reactivity	Human;Mouse;Rat
Immunogen	Synthetic Peptide
Host	Mouse
Isotype	IgG
Clone	4H2
Purification	Protein A purification
Conjugation	Unconjugated
buffer	Phosphate buffered solution, pH 7.4, containing 0.05% stabilizer, 0.5% protein protectant and 50% glycerol.

Applications

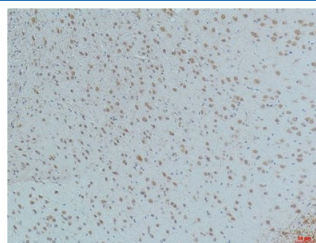
Recommended Dilution

IHC	1:100-200
------------	-----------

Data



Immunohistochemistry of paraffin-embedded Rat brain tissue using Phospho-CAMK2 beta/gamma/delta (Thr287) Monoclonal Antibody at dilution of 1:200.



Immunohistochemistry of paraffin-embedded Mouse brain tissue using Phospho-CAMK2 beta/gamma/delta (Thr287) Monoclonal Antibody at dilution of 1:200.

Preparation & Storage

Storage	Store at -20°C Valid for 12 months. Avoid freeze / thaw cycles.
Shipping	The product is shipped with ice pack, upon receipt, store it immediately at the temperature recommended.

Background

CAMK2B (Calcium/Calmodulin Dependent Protein Kinase II Beta) is a Protein Coding gene. Diseases associated with CAMK2B include Phencyclidine Abuse. Among its related pathways are ICos-ICosL Pathway in T-Helper Cell and Development Endothelin-1/EDNRA signaling. GO annotations related to this gene include protein homodimerization activity and protein kinase activity. An important paralog of this gene is CAMK2G.

CAMK2G (Calcium/Calmodulin Dependent Protein Kinase II Gamma) is a Protein Coding gene. Diseases associated with CAMK2G include Timothy Syndrome and Exudative Vitreoretinopathy. Among its related pathways are ICos-ICosL Pathway in T-Helper Cell and Development Endothelin-1/EDNRA signaling. GO annotations related to this gene include protein homodimerization activity and protein kinase activity. An important paralog of this gene is CAMK2B.

CAMK2D (Calcium/Calmodulin Dependent Protein Kinase II Delta) is a Protein Coding gene. Diseases associated with CAMK2D include Dilated Cardiomyopathy and Cardiomyopathy. Among its related pathways are ICos-ICosL Pathway in T-Helper Cell and Development Endothelin-1/EDNRA signaling. GO annotations related to this gene include protein homodimerization activity and protein kinase activity. An important paralog of this gene is CAMK2B.

For Research Use Only